

Printing to PowerRIP 2000 using Corel Draw 8

Using Server/Standalone Macintosh, OS 8.6 or later

Note: - The following directions are for LaserWriter 8.7 and AdobePS 8.7.

- Desktop Print Monitor and Desktop Print Spooler must be active in the Extension Manager.

This document assumes that PowerRIP 2000 has been launched and Open Printer has occurred. It also assumes that a Corel Draw 8 file is on the Macintosh screen and is ready to be ripped and printed.

LaserWriter 8.7

Step 1:

Chooser

In the Chooser highlight **LaserWriter 8.7**.
Highlight your printer.
Click **Create**.

Note: The first time you select the PPD it will say *Create*. All future selections in the Chooser will say *Setup*.

Click **Select PPD**.
Highlight the appropriate PPD for your printer and click **Choose**.
Close the Chooser
A Desktop Printer will be created.

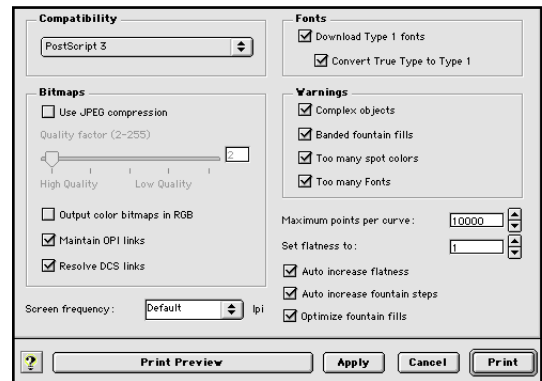
Step 2:

Go to **File>Print**.

The Corel Draw 8 Print dialog will display.

PostScript tab

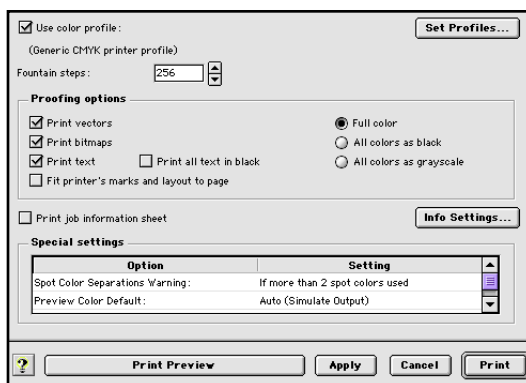
Select **Auto increase flatness**.
Select **Auto increase fountains steps**.
Select **Optimize fountain fills**.



Step 3:

Miscellaneous tab

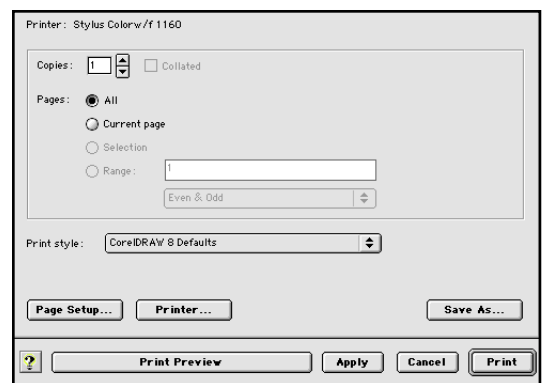
Select **Full Color**.



Step 4:

General tab

Select the pages you want to print.



Click **Apply**.

Click **Printer** in the bottom left corner of the General tab.

The LaserWriter 8.7 Print dialog will display.

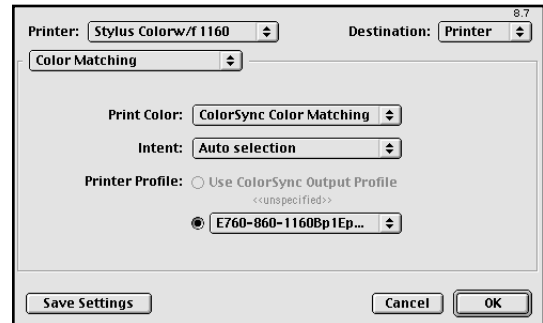
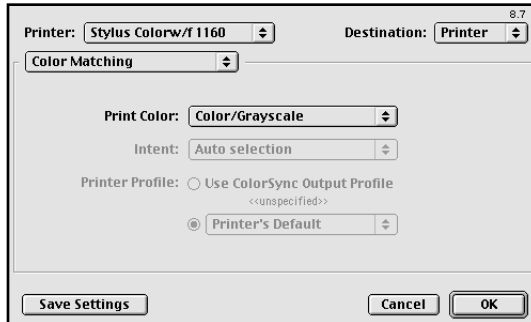
Printing to PowerRIP 2000 using Corel Draw 8

Using Server/Standalone Macintosh, OS 8.6 or later (Cont)

Step 5: Color Matching

If not using ICC Profiles select **Color/Grayscale**

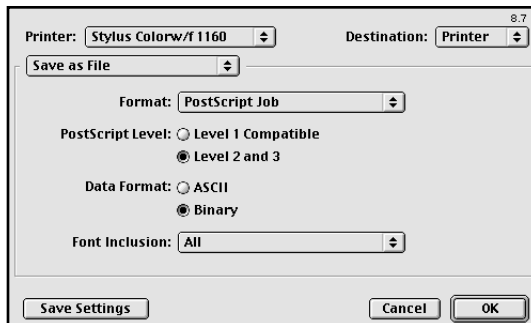
If using ICC Profiles select **ColorSync Color Matching** in Print Color.
Select **Perceptual Matching** in Intent.
Select the **ICC Profile** you want to use.



Note: For an in-depth discussion of ColorSync and ICC Profiles please read the ColorSync ICC Read Me.

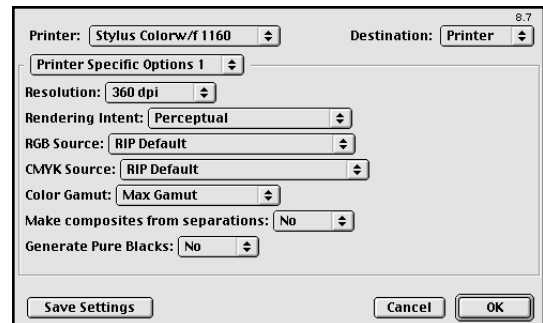
Step 6: Save As File

Select **Level 2 and 3** in PostScript Level.
Select **Binary** in Data Format.
Select **All** in Font Inclusion.



Step 7: Printer Specific Options 1

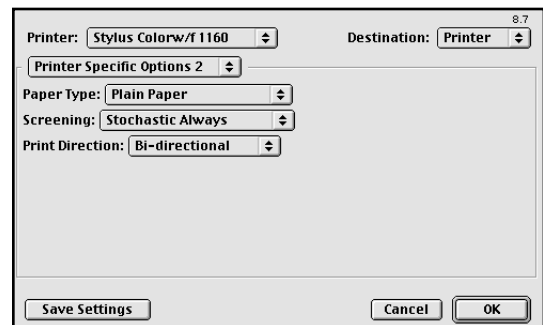
For an in-depth discussion of the Printer Specific Options for your printer see Appendix 4 of the PowerRIP 2000 manual.



Step 8: Printer Specific Options 2

Select the appropriate **Paper Type**.
Select **Stochastic Always** in Screening.
Select **Bi-Directional** in Print Direction.

Click **Save Settings**.
Click **OK**.
Click **Print**.
The file will process and print.



Printing to PowerRIP 2000 using Corel Draw 8

Using Server/Standalone Macintosh, OS 8.6 or later (Cont)

AdobePS 8.7

Step 1:

Chooser

In the Chooser highlight **AdobePS 8.7**.
Highlight your printer. Click **Create**.

Note: The first time you select the PPD it will say Create. All future selections in the Chooser will say Setup.

Click **Select PPD**. Highlight the appropriate PPD for your printer and click **Select**.

Close the Chooser.

A Desktop Printer will be created.

Step 2:

Go to **File>Print**.

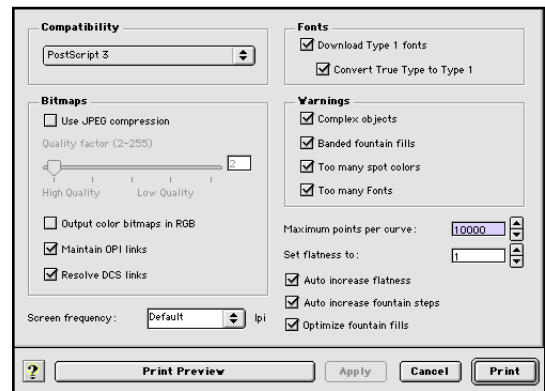
The Corel Draw 8 Print dialog will display.

PostScript tab

Select **Auto increase flatness**.

Select **Auto increase fountain steps**.

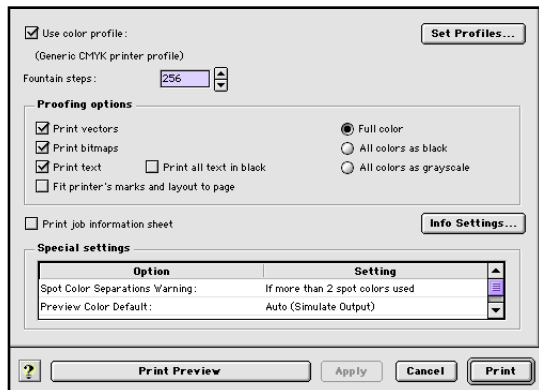
Select **Optimize fountain fills**.



Step 3:

Miscellaneous tab

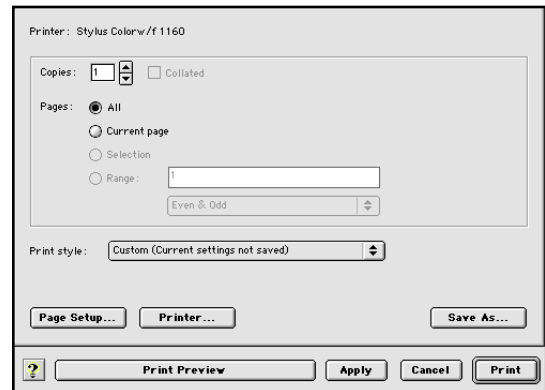
Select **Full Color**.



Step 4:

General tab

Select the pages you want to print.



Click **Apply**.

Click **Printer** in the bottom left corner of the General tab.

The AdobePS 8.7 Print dialog will display.

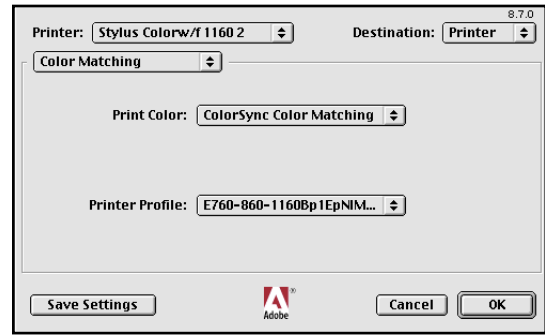
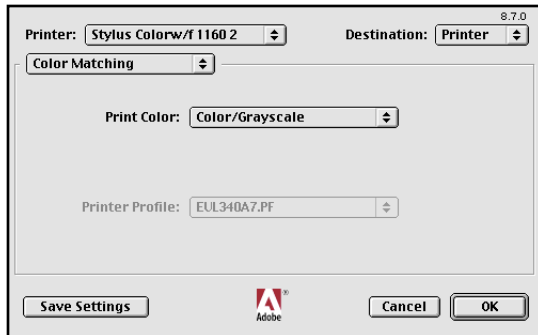
Printing to PowerRIP 2000 using Corel Draw 8

Using Server/Standalone Macintosh, OS 8.6 or later (Cont)

Step 5: Color Matching

If not using ICC Profiles select **Color/Grayscale**

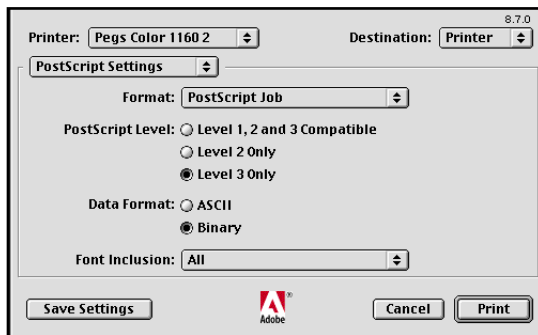
If using ICC Profiles select **ColorSync Color Matching** in Print Color.
Select **Perceptual Matching** in Intent.
Select the **ICC Profile** you want to use.



Note: For an in-depth discussion of ColorSync and ICC Profiles please read the ColorSync ICC Read Me.

Step 6: PostScript Settings

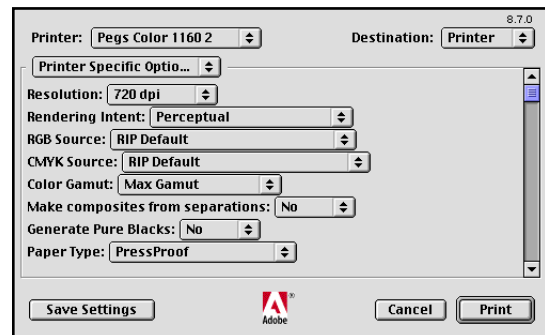
Select **Level 1, 2 and 3 Compatible** in PostScript Level.
Select **Binary** in Data Format.
Select **All** in Font Inclusion.



Step 7: Printer Specific Options

For an in-depth discussion of the Printer Specific Options for your printer see Appendix 4 of the PowerRIP 2000 manual.

Note: This is a scrollable window.



Click **Save Settings**.
Click **OK**.
Click **Print**.
The file will process and print.