

Printing to PowerRIP 2000 using FreeHand 9

Using Server/Standalone Macintosh, OS 8.6 or later

Note: - The following directions are for LaserWriter 8.7 and AdobePS 8.7.

- Desktop Print Monitor and Desktop Print Spooler must be active in the Extension Manager.

This document assumes that PowerRIP 2000 has been launched and Open Printer has occurred. It also assumes that a FreeHand file is on the Macintosh screen and is ready to be processed and printed.

LaserWriter 8.7

Step 1:

Chooser

In the Chooser highlight **LaserWriter 8.7**.
Highlight your printer.
Click **Create**.

Note: The first time you select the PPD it will say *Create*. All future selections in the Chooser will say *Setup*.

Click **Select PPD**.
Highlight the appropriate PPD for your printer and click **Select**.
Close the Chooser
A Desktop Printer will be created.

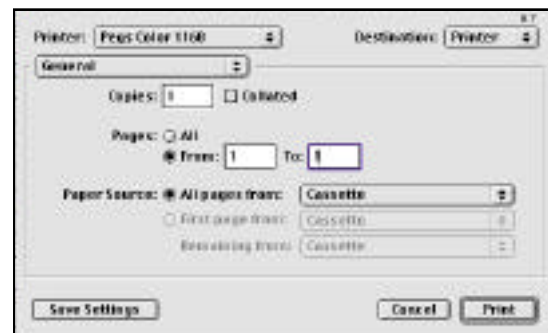
Step 2:

Go to **File>Print**

The **LaserWriter 8.7** print dialog will display.

General

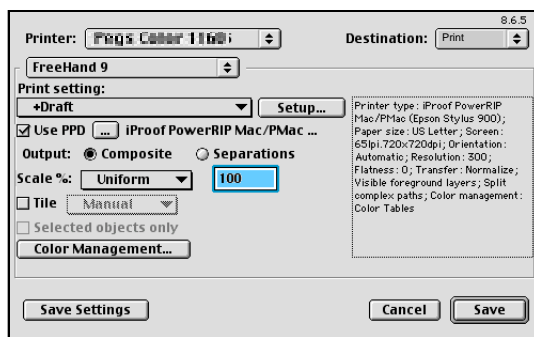
Define the pages you want to print in To and From.



Step 3:

FreeHand 9

Select Use PPD and Composite.

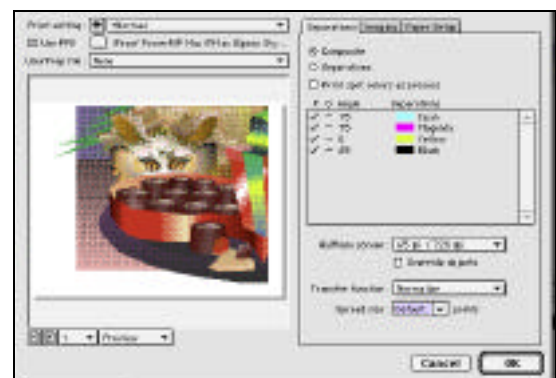


Step 4:

Click **Setup**.

Separation tab

Composite should be selected. You should also make sure that Use PPD is selected and the name of the PPD is displayed to the right of [...]



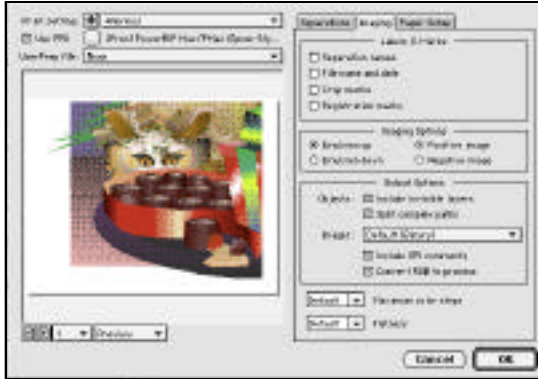
Printing to PowerRIP 2000 using FreeHand 9

Using Server/Standalone Macintosh, OS 8.6 or later (Cont)

Step 5:

Image tab

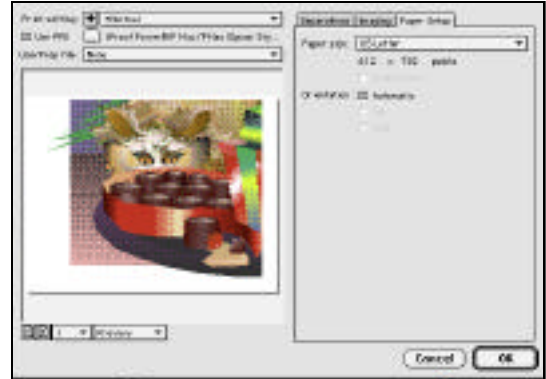
Go to the Image tab if you want to print Crop Marks, Registration Marks etc.



Step 6:

Paper Setup tab

Select the correct Paper Size.
Click OK.



Step 7: Color Matching

If not using ICC Profiles select **Color/Grayscale**

If using ICC Profiles select **ColorSync
Color Matching** in Print Color.
Select **Perceptual Matching** in Intent.
Select the **ICC Profile** you want to use.



Note: For an in-depth discussion of ColorSync and ICC Profiles please read the ColorSync ICC Read Me.

Step 8: Save As File

Select **Level 2 and 3** in PostScript Level.
Select **Binary** in Data Format.
Select **All** in Font Inclusion.



Printing to PowerRIP 2000 using FreeHand 9

Using Server/Standalone Macintosh, OS 8.6 or later (Cont)

Step 9:

Printer Specific Options 1

For an in-depth discussion of the Printer Specific Options for your printer see Appendix 4 of the PowerRIP 2000 manual.



Step 10:

Printer Specific Options 2

Select the appropriate **Paper Type**.
Select **Stochastic Always** in Screening.
Select **Bi-Directional** in Print Direction.



Click **Save Settings**.

Click **Print**.

The file will process and print.

AdobePS 8.7

Step 1:

Chooser

In the Chooser highlight **AdobePS 8.7**.
Highlight your printer.
Click **Create**.

Note: The first time you select the PPD it will say Create. All future selections in the Chooser will say Setup.

Click **Select PPD**.

Highlight the appropriate PPD for your printer and click **Select**.

Close the Chooser

A Desktop Printer will be created.

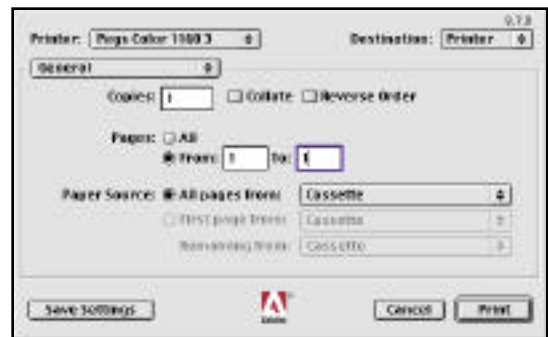
Step 2:

Go to **File>Print**

The **AdobePS 8.7** print dialog will display.

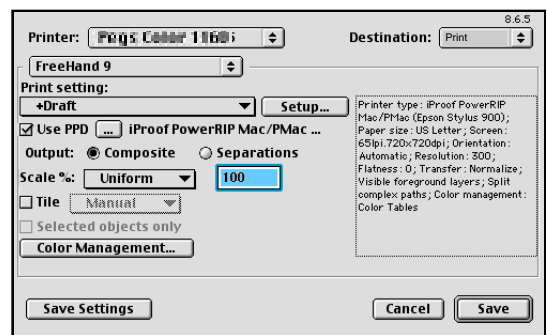
General

Define the pages you want to print in To and From.



Step 3: FreeHand 9

Select Use PPD and Composite.




Printing to PowerRIP 2000 using FreeHand 9

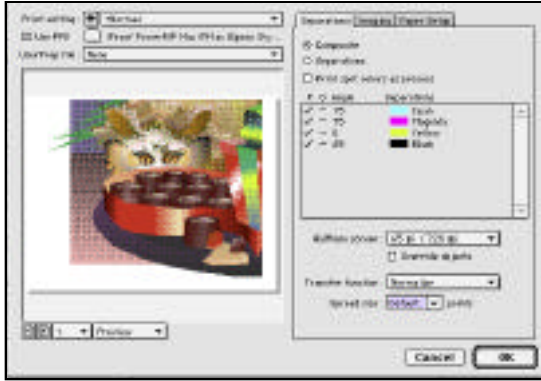
Using Server/Standalone Macintosh, OS 8.6 or later (Cont)

Step 4:

Click **Setup**.

Separation tab

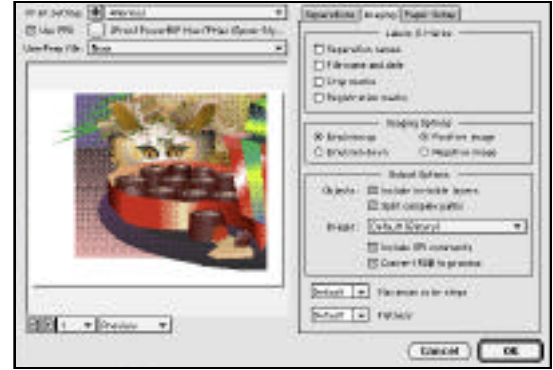
Composite should be selected. You should also make sure that Use PPD is selected and the name of the PPD is displayed to the right of 



Step 5:

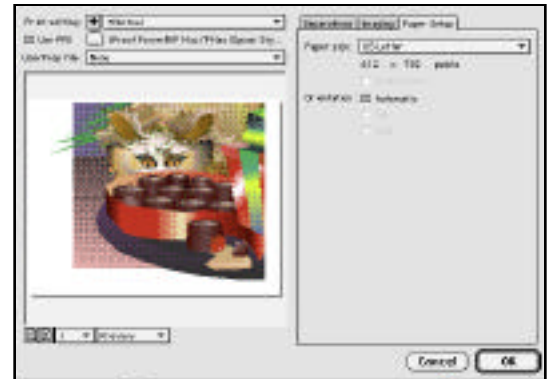
Image tab

Go to the Image tab if you want to print Crop Marks, Registration Marks etc.



Step 6: Paper Setup tab

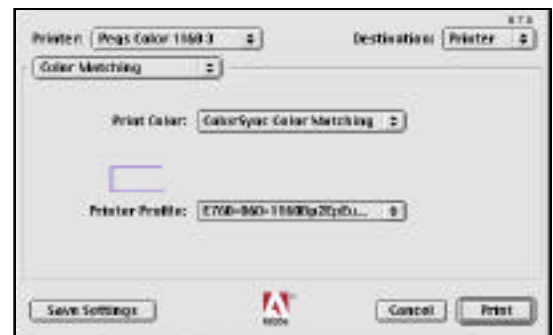
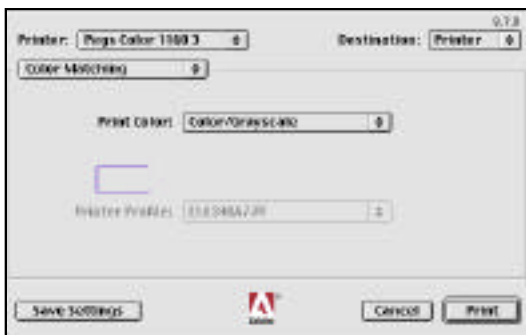
Select the correct Paper Size.
Click **OK**.



Step 7: Color Matching

If not using ICC Profiles select **Color/Grayscale**

If using ICC Profiles select **ColorSync**
Color Matching in Print Color.
Select **Perceptual Matching** in Intent.
Select the **ICC Profile** you want to use.



Printing to PowerRIP 2000 using QuarkXPress 4.1

Using Server/Standalone Macintosh, OS 8.6 or later (Cont)

Step 8:

PostScript Settings

Select **Level 1, 2 and 3 Compatible** in PostScript Level.

Select **Binary** in Data Format.



Step 9:

Printer Specific Options

For an in-depth discussion of the Printer Specific Options for your printer see Appendix 4 of the PowerRIP 2000 manual.

Note: This is a scrollable window.



Click **Save Settings**.

Click **Print**.

The file will process and print.