

Printing to PowerRIP 2000 using QuarkXPress 4.1

Using Server/Standalone Macintosh, OS 8.6 or later

- Note:**
- The following directions are for LaserWriter 8.7 and AdobePS 8.7.
 - Desktop Print Monitor and Desktop Print Spooler must be active in the Extension Manager.
 - The available options in Printer Specific Options are dependent on your printer. Not all options are available on all printers.

This document assumes that PowerRIP 2000 has been launched and Open Printer has occurred. It also assumes that a QuarkXPress file is on the Macintosh screen and is ready to be processed and printed.

LaserWriter 8.7

Step 1:

Chooser

In the Chooser highlight **LaserWriter 8.7**.
Highlight your printer.
Click **Create**.

Note: The first time you select the PPD it will say *Create*. All future selections in the Chooser will say *Setup*.

Click **Select PPD**.

Highlight the appropriate PPD for your printer and click **Choose**.

Close the Chooser

A Desktop Printer will be created.

Step 2:

Go to **File>Print**.

The QuarkXPress Print dialog will display.

Document tab

Deselect **Include Blank Pages**.

Print Style: **Default** ▼
Copies: **1** Pages: **All** ▼ Range Separators...
Document Setup Output Options Preview Profiles
 Separations Spreads Collate
 Include Blank Pages Thumbnails Back to Front
Page Sequence: **All** ▼ Bleed: **0"**
Registration: **Off** ▼ Offset:
Tiling: **Off** ▼ Overlap: Absolute Overlap
Page Setup... Printer... Capture Settings Cancel Print

Step 3:

Setup tab

Select your printer in **Printer Descriptions**.
Select the appropriate **Paper Size** and **Page Positioning**.

Print Style: **Default** ▼
Copies: **1** Pages: **All** ▼ Range Separators...
Document Setup Output Options Preview Profiles
Printer Description: **iProof PowerRIP Mac/PMac (Epson Stylus COLOR...)** ▼
Paper Size: **US Letter** ▼ Paper Offset:
Paper Width: **51p** Paper Gap:
Paper Height: **66p** ▼ Fit in Print Area
Reduce or Enlarge: **100%** Orientation:
Page Positioning: **Left Edge** ▼
Page Setup... Printer... Capture Settings Cancel Print

Step 4:

Output tab

Select **Composite CMYK** in Print Colors.

Select **Conventional** in Halftoning.

Print Style: **Default** ▼
Copies: **1** Pages: **All** ▼ Range Separators...
Document Setup Output Options Preview Profiles
Print Colors: **Composite CMYK** ▼ Resolution: **360** ▼ (dpi)
Halftoning: **Conventional** ▼ Frequency: **65** ▼ (lpi)

Print	Plate	Halftone	Frequency	Angle	Function
<input checked="" type="checkbox"/>	Process Cyan	-	65	15°	Default
<input checked="" type="checkbox"/>	Process Magenta	-	65	75°	Default
<input checked="" type="checkbox"/>	Process Yellow	-	65	0°	Default
<input checked="" type="checkbox"/>	Process Black	-	65	45°	Default

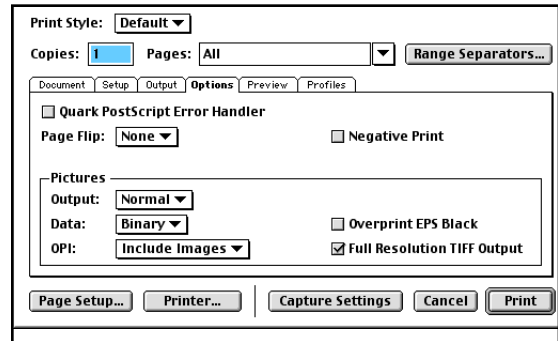
Page Setup... Printer... Capture Settings Cancel Print

Printing to PowerRIP 2000 using QuarkXPress 4.1

Using Server/Standalone Macintosh, OS 8.6 or later (Cont)

Step 5: Options tab

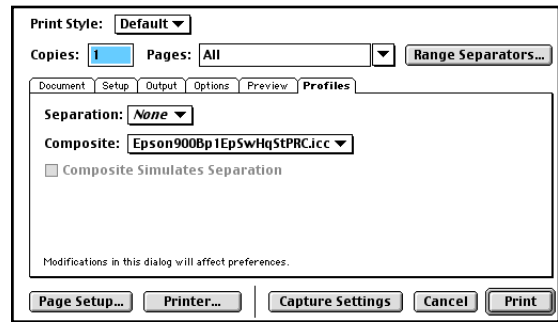
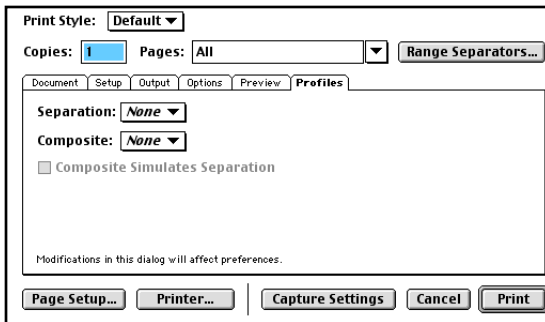
Select **Normal** in Output.
Select **Binary** in Data.
Select **Full Resolution TIFF Output**.



Step 6: Profiles tab

If not using ICC Profiles Composite should be **None**.

If using ICC Profiles you should select the appropriate ICC Profile, for your printer, in Composite.



Note: For an in-depth discussion of ColorSync and ICC Profiles please read the ColorSync ICC Read Me.

Click **Capture Settings**.

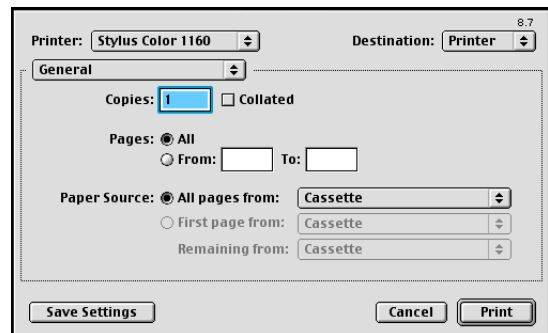
Click **Printer** in the bottom left corner of the dialog.

Step 7: General

The LaserWriter print dialog will display.

General

Select **Printer** in Destination.

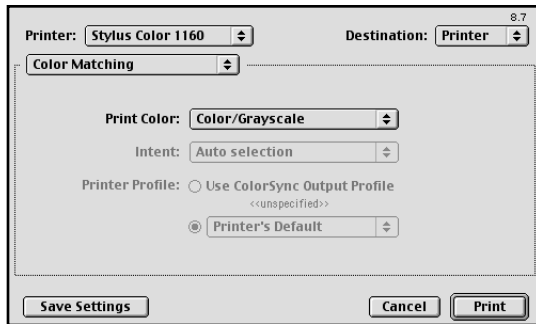


Printing to PowerRIP 2000 using QuarkXPress 4.1

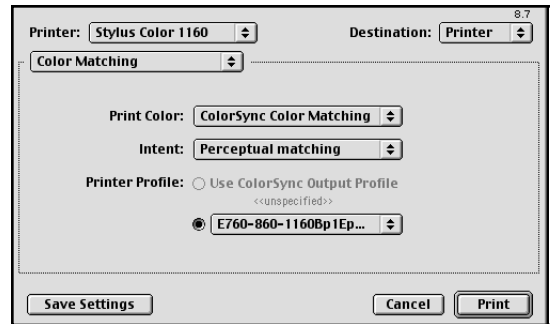
Using Server/Standalone Macintosh, OS 8.6 or later (Cont)

Step 8: Color Matching

If not using ICC profiles:
Select **Color/Grayscale** in Print Color.

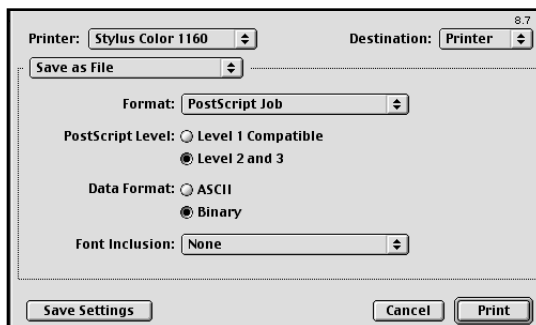


If using ICC profiles:
Select **ColorSync Color Matching** in Print Color.
Select **Perceptual Matching** in Intent.
Select the appropriate ICC profile, for your printer,
in Printer Profile.



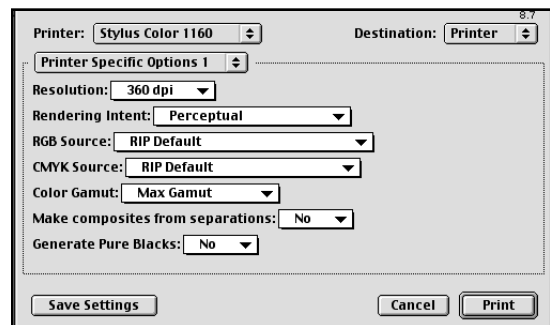
Step 9: Save as File

Select **Binary** in Data Format.
Select **All** in Font Inclusion.



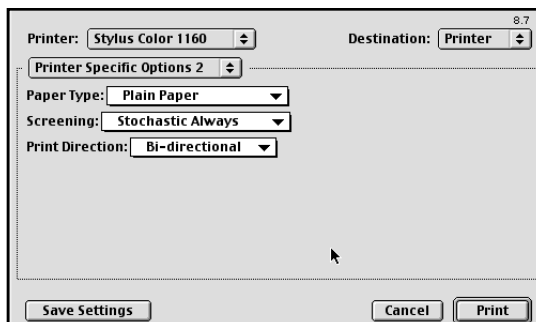
Step 10: Printer Specific Options 1

For an in-depth discussion of the Printer Specific Options for your printer see Appendix 4 of the PowerRIP 2000 manual.



Step 11: Printer Specific Options 2

Select the appropriate **Paper Type**.
Select **Stochastic Always** in Screening.
Select **Bi-Directional** in Print Direction.



Step 12:

Click **Print**.
Click **Print**.
The file will process and print.

Printing to PowerRIP 2000 using QuarkXPress 4.1

Using Server/Standalone Macintosh, OS 8.6 or later (Cont)

AdobePS 8.7

Step 1:

Chooser

In the Chooser highlight **AdobePS 8.7**.
Highlight your printer.
Click **Create**.

Note: The first time you select the PPD it will say *Create*. All future selections in the Chooser will say *Setup*.

Click **Select PPD**. Highlight the appropriate PPD for your printer and click **Select**.
Close the Chooser.
A Desktop Printer will be created.

Step 2:

Go to **File>Print**.

The QuarkXPress Print dialog will display.

Document tab

Deselect **Include Blank Pages**.

Print Style: Default
Copies: 1 Pages: All Range Separators...

Document Setup Output Options Preview Profiles

Separations Spreads Collate
 Include Blank Pages Thumbnails Back to Front
Page Sequence: All Bleed: 0"
Registration: Off Offset:
Tiling: Off Overlap: Absolute Overlap

Page Setup... Printer... Capture Settings Cancel Print

Step 3:

Setup tab

Select your printer in **Printer Descriptions**.
Select the appropriate **Paper Size** and **Page Positioning**.

Print Style: Default
Copies: 1 Pages: All Range Separators...

Document Setup Output Options Preview Profiles

Printer Description: iProof PowerRIP Mac/PMac (Epson Stylus COLOR...)
Paper Size: US Letter
Paper Width: 8.5" Paper Offset:
Paper Height: 11" Page Gap:
Reduce or Enlarge: 100% Fit in Print Area
Page Positioning: Left Edge Orientation:

Page Setup... Printer... Capture Settings Cancel Print

Step 4:

Output tab

Select **Composite CMYK** in Print Colors.

Select **Conventional** in Halftoning.

Print Style: Default
Copies: 1 Pages: All Range Separators...

Document Setup Output Options Preview Profiles

Print Colors: Composite CMYK Resolution: 360 (dpi)
Halftoning: Conventional Frequency: 65 (lpi)

Print	Plate	Halftone	Frequency	Angle	Function
<input checked="" type="checkbox"/>	Process Cyan	-	65	15°	Default
<input checked="" type="checkbox"/>	Process Magenta	-	65	75°	Default
<input checked="" type="checkbox"/>	Process Yellow	-	65	0°	Default
<input checked="" type="checkbox"/>	Process Black	-	65	45°	Default

Page Setup... Printer... Capture Settings Cancel Print

Step 5: Options tab

Select **Normal** in Output.

Select **Binary** in Data.

Select **Full Resolution TIFF Output**.

Print Style: Default
Copies: 1 Pages: All Range Separators...

Document Setup Output Options Preview Profiles

Quark PostScript Error Handler
Page Flip: None Negative Print

Pictures
Output: Normal
Data: Binary Overprint EPS Black
OPI: Include Images Full Resolution TIFF Output

Page Setup... Printer... Capture Settings Cancel Print

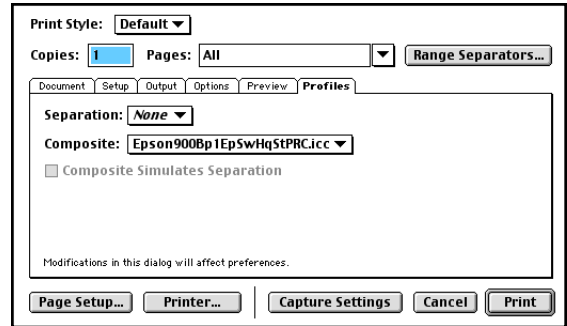
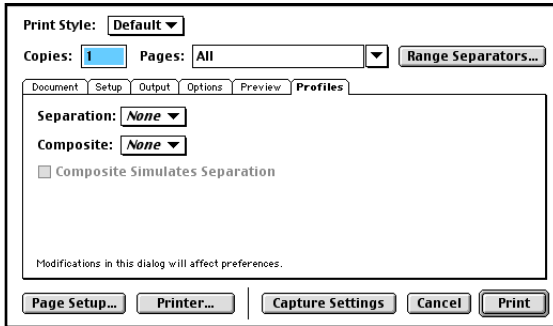
Printing to PowerRIP 2000 using QuarkXPress 4.1

Using Server/Standalone Macintosh, OS 8.6 or later (Cont)

Step 6: Profiles tab

If not using ICC Profiles Composite should be **None**.

If using ICC Profiles you should select the appropriate ICC Profile, for your printer, in Composite.



Note: For an in-depth discussion of ColorSync and ICC Profiles please read the ColorSync ICC Read Me.

Click **Printer** in the bottom left corner of the dialog.

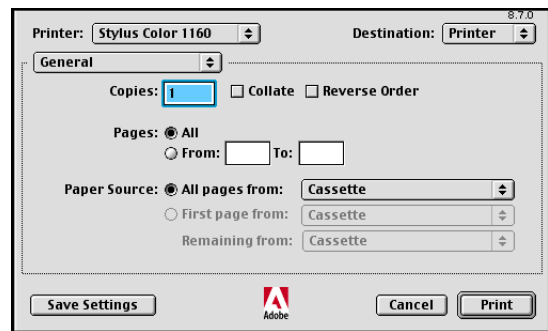
Step 7: General

The AdobePS Print dialog will display.

Click **Printer** in the bottom left corner of the dialog.

General

Select **Printer** in Destination.

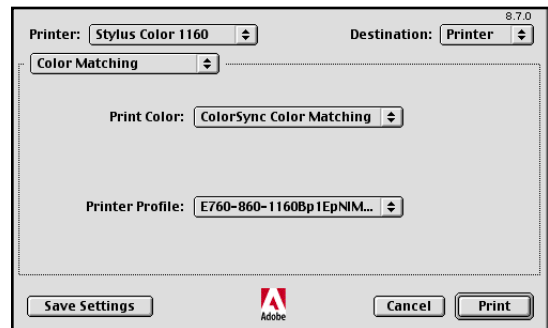
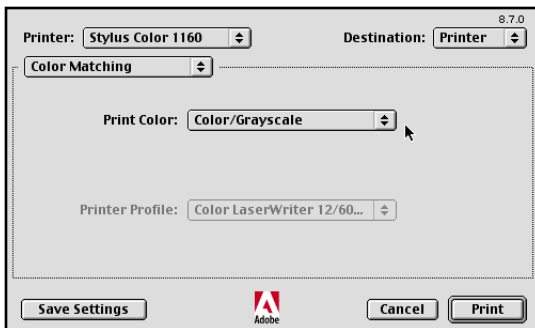


Step 8: Color Matching

If not using ICC profiles:

Select **Color/Grayscale** in Print Color.

If using ICC Profiles you should select the appropriate ICC Profile in Composite.



Note: For an in-depth discussion of ColorSync and ICC Profiles please read the ColorSync ICC Read Me.

Click **Save Settings**. Click **Printer** in the bottom left corner of the dialog.

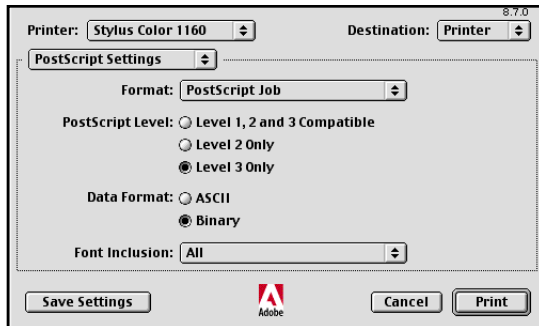
Printing to PowerRIP 2000 using QuarkXPress 4.1

Using Server/Standalone Macintosh, OS 8.6 or later (Cont)

Step 9:

PostScript Settings

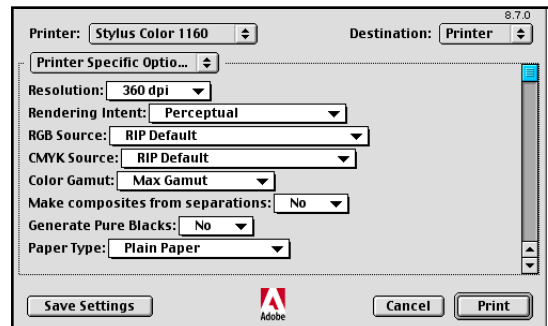
Select **Binary** in Data Format.
Select **All** in Font Inclusion.
Select **Level 3 Only**.



Step 10:

Printer Specific Options

For an in-depth discussion of the Printer Specific Options for your printer see Appendix 4 of the PowerRIP 2000 manual.



Note: This is a scrollable dialog.

Click **Print**.

Click **Print**.

The file will process and print.