

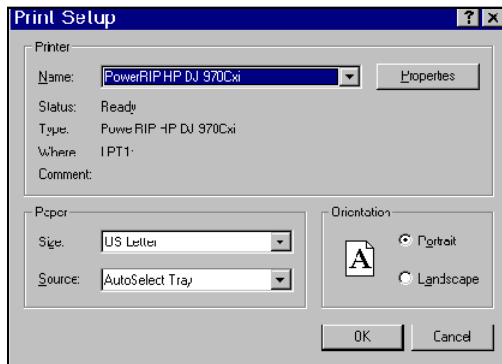
Printing to PowerRIP 2000 from Illustrator 8.x using Win 95/98

Note: It is assumed that an Illustrator file is on the screen and ready to be printed.

Step 1:

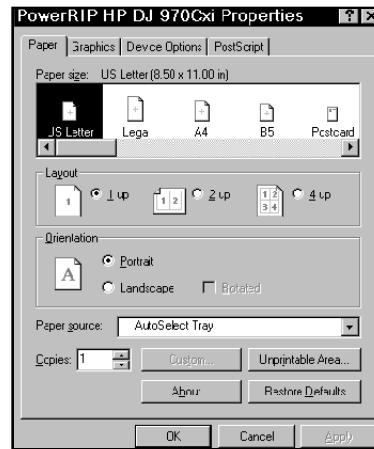
File>Page Setup

The Page Setup dialog will display.
Select your **printer** in the Name pulldown.
Select the appropriate **paper size** in the Size pull down.



Step 2:

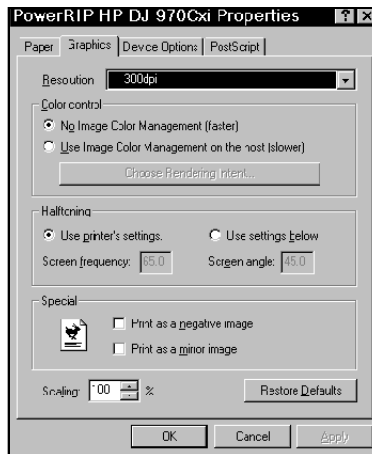
Click **Properties** in the top right corner of the dialog.
Page Setup tab
Select the appropriate **Paper Size**.



Step 3:

Graphic tab

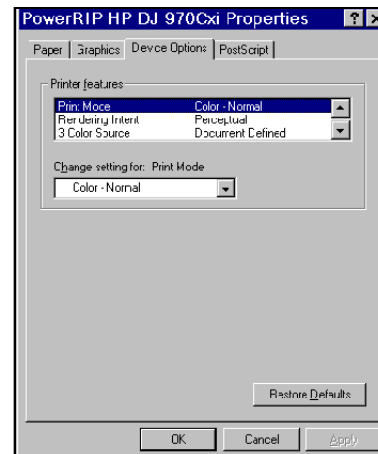
Select the appropriate **resolution**.



Step 4:

Device Options tab

Select the features appropriate for your needs.
This is a scrollable dialog. Do not leave any of the features as Printer Default. Define every feature.
Click **OK**. Click **OK**.



Printing to PowerRIP 2000 from Illustrator 8.x using Win 95/98 (Cont)

Step 5:

File>Print

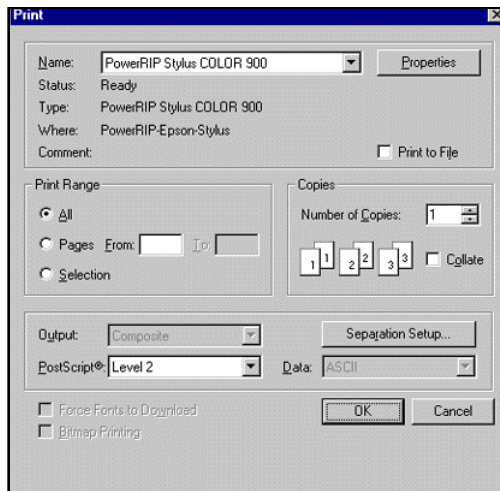
The Print dialog will display.

Note: If you are going to print separations do step 6 and 7.
If you are printing a composite do step 5 only.

Click **OK**.

If this is the first file you are sending, PowerRIP 2000 will automatically launch, process, and print.

Auto launch will only happen if you have installed PowerRIP 2000 on your c:\ drive. If it is installed on any other drive, you will have to manually launch. To manually launch go to **Start>Programs>PowerRIP 2000 HP>PowerRIP 2000 HP**.



Step 6:

In the Print dialog click **Separation Setup** in the bottom right corner.

The Separation dialog will display.

Click **Open PPD**.

The Open dialog will display. Navigate to **PRPC2000HP>PPD>US** and select the PPD for your printer.

Note: French, German, and UK PPD folders also can be found in the PPD folder.

Click **Open**.

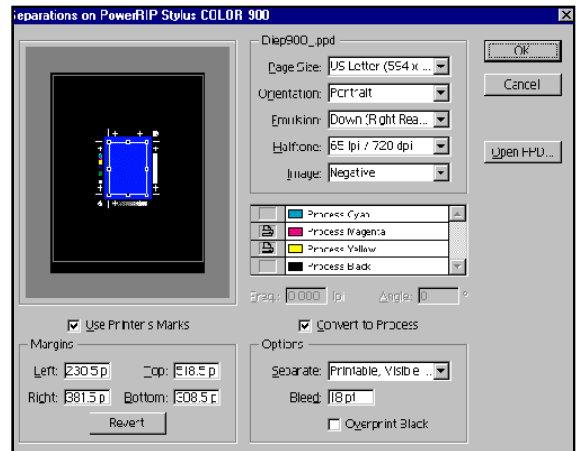
Step 7:

The Separation dialog will redisplay and be active.

Make sure your Page Size, Orientation etc., is correct.

Click **OK**.

Click **OK**.



PowerRIP 2000 will automatically launch if installed on the c:\ drive, process, and print.