

# Printing to PowerRIP 2000 from PageMaker 6.5 using Win 95/98

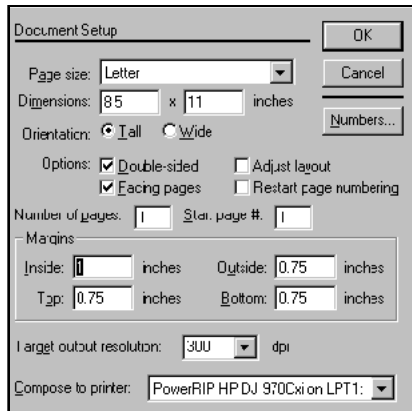
**Note:** Before you print from PageMaker you must copy the appropriate PPD from **PRPC2000HP>Ppd>US** to **PM65>RSRC>USEGLISH>Ppd4**.  
The PPDs are IPHP1200.ppd and IPHP970\_.ppd.

It is assumed that a PageMaker 6.5 file is on the screen and ready to be printed.

## Step 1:

### File>Document Setup

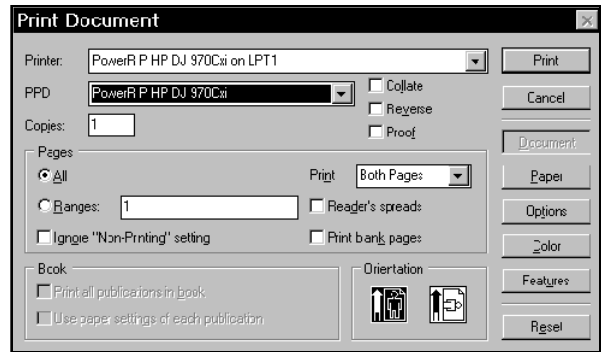
The Document Setup dialog will display.  
Select your **Page Size**.  
Select your printer in **Compose to Printer**.  
Click **OK**.



## Step 2:

### File>Print

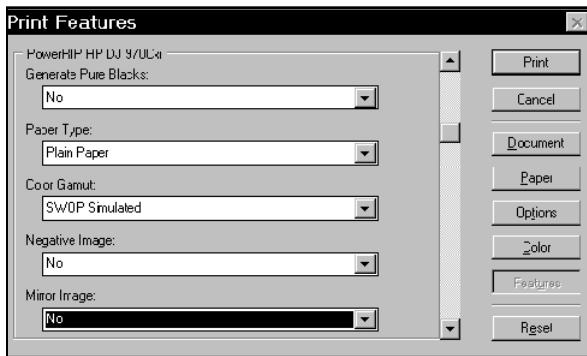
The Print Document dialog will display.  
Select your printer in the Printer pull down.



## Step 3:

### Click Features

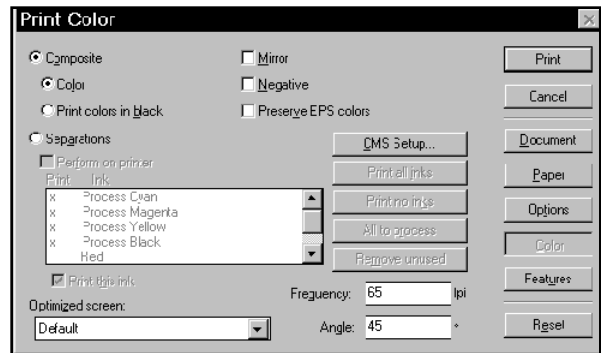
The Print features dialog will display.  
Select the **Features** appropriate for your needs.  
This is a scrollable dialog. Do not leave any of the features as Printers Defaults. Define every feature.



## Step 4:

### Click Color

The Print Color dialog will display.  
Select **Composite Color**.

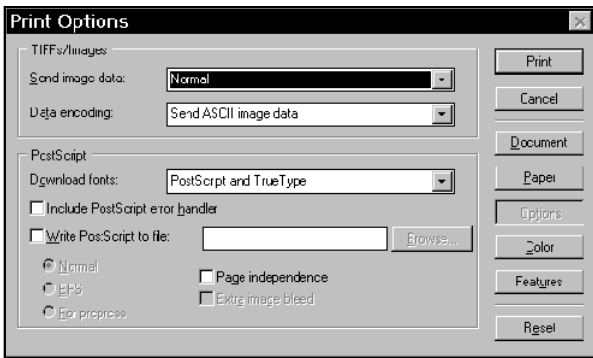


# Printing to PowerRIP 2000 from PageMaker 6.5 using Win 95/98 (Cont)

## Step 5:

### Click **Options**

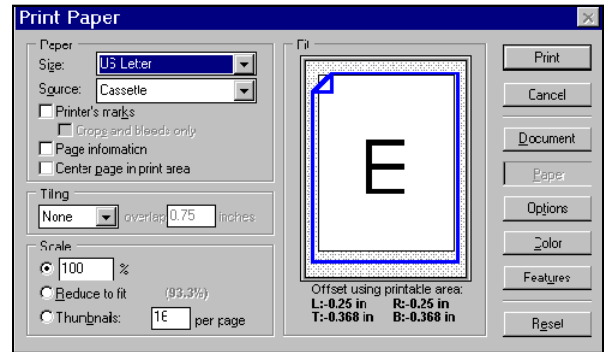
The Print Options dialog will display.  
Select **Normal** in the Send Image data pull  
down.



## Step 6:

### Click **Paper**

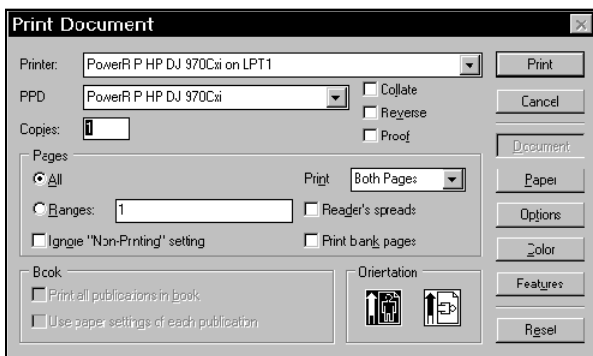
The Print paper dialog will display.  
Select the appropriate **paper size** in Size.



## Step 7:

### Click **Document**

The Print Document dialog will display.  
Make sure the correct PPD is still selected in  
PPD and the correct printer is still selected in  
Printer.



## Step 8:

### Click **Print**.

If this is the first file you are sending, PowerRIP  
2000 will automatically launch, process, and  
print.

Auto launch will only happen if you have  
installed PowerRIP 2000 on your c:\ drive. If it  
is installed on any other drive, you will have to  
manually launch. To manually launch go to  
Start>Programs>PowerRIP 2000 for  
HP>PowerRIP 2000 for HP.