

Printing to PowerRIP 2000 from PageMaker 6.5 using NT 4.0

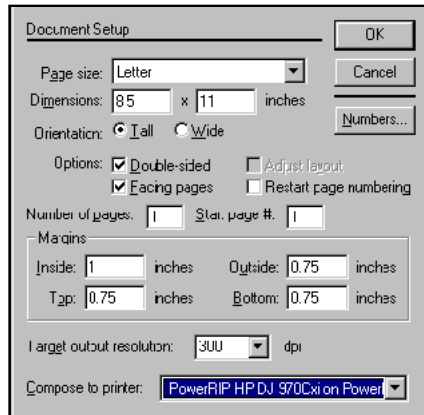
Note: Before you print from PageMaker you must copy the appropriate PPD from **PRPC2000HP>Ppd>US** to **PM65>RSRC>USEGLISH>Ppd4**.
The PPDs are IPHP1200.ppd and IPHP970_.ppd

It is assumed that a PageMaker 6.5 file is on the screen and ready to be printed.
You must **Print to File** when you use NT 4.0. You can not do a direct print.

Step 1:

File>Document Setup

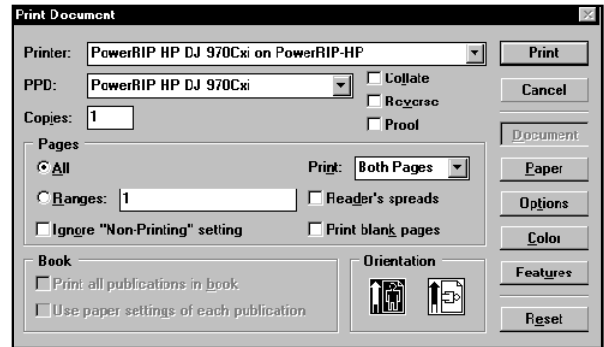
The Document Setup dialog will display.
Select your **Page Size**.
Select your printer in **Compose to Printer**.
Click **OK**.



Step 2:

File>Print

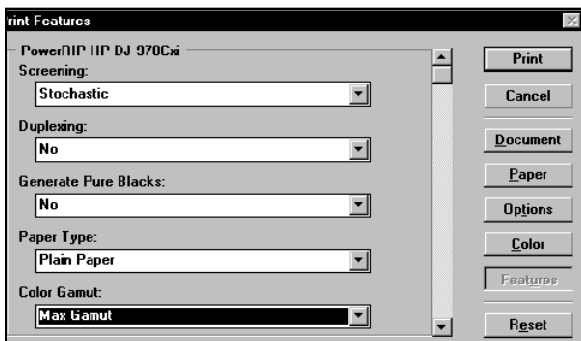
The Print Document dialog will display.
Select your printer in the Printer pull down.



Step 3:

Click Features

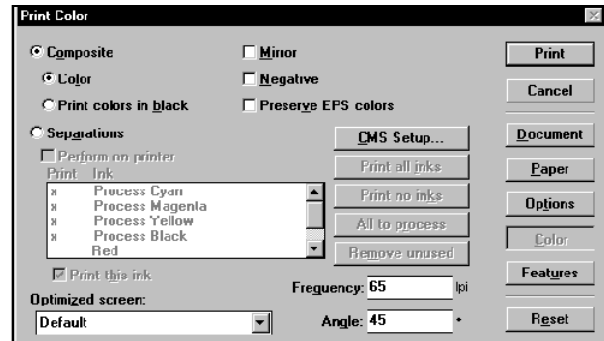
The Print features dialog will display.
Select the **Features** appropriate for your needs.
This is a scrollable dialog. Do not leave any of the features as Printers Defaults. Define every feature.



Step 4:

Click Color

The Print Color dialog will display.
Select **Composite Color**.

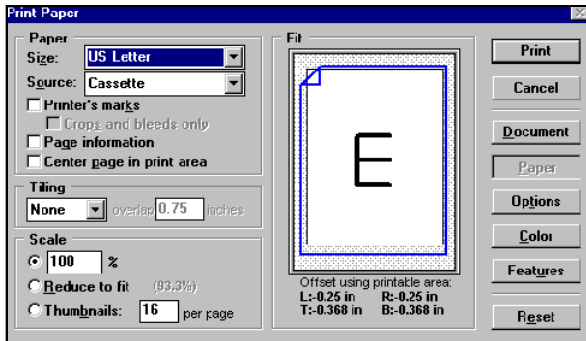


Printing to PowerRIP 2000 from PageMaker 6.5 using NT 4.0 (Cont)

Step 5:

Click **Paper**

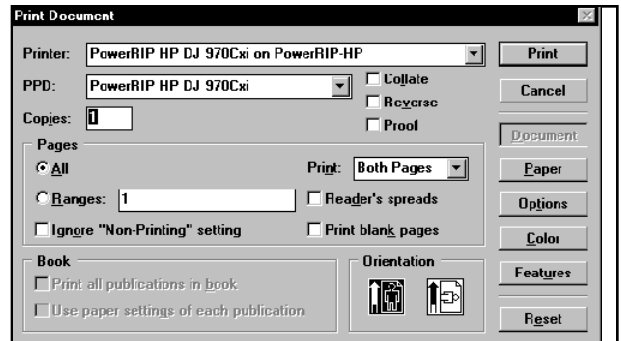
The Print Paper dialog will display.
Select the appropriate **paper size** in Size.



Step 6:

Click **Document**

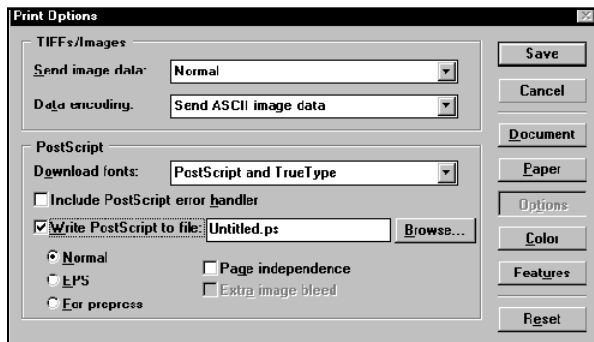
The Print Document dialog will display.
Make sure the correct PPD is still selected in PPD and the correct printer is still selected in Printer.



Step 7:

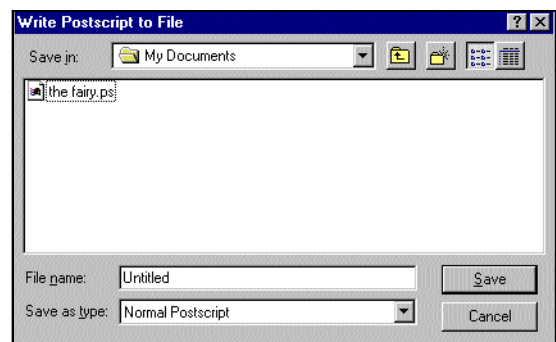
Click **Options**

The Print Options dialog will display.
Select **Normal** in the Send Image data pull down.
Select **Write PostScript to File**.
The name of your file should display.
Click **Browse**.



Step 8:

Navigate to the folder you wish to save the PostScript file to.
Click **Save**.
The Print Options dialog will display.
Click **Save**.

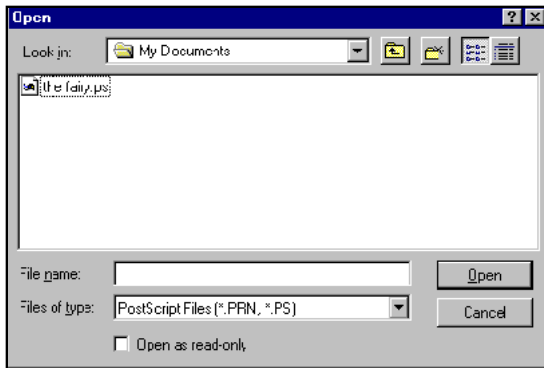


Printing to PowerRIP 2000 from PageMaker 6.5 using NT 4.0 (Cont)

Step 9:

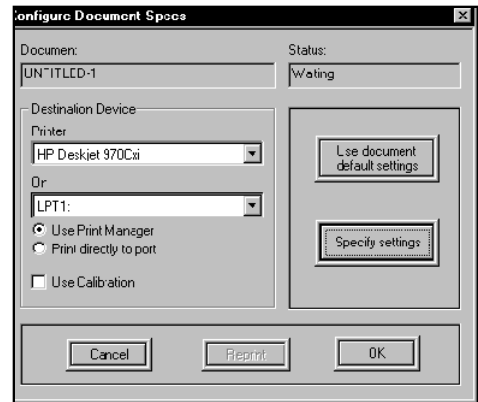
Launch PowerRIP 2000 by going to **Start>Programs>PowerRIP 2000 for HP>PowerRIP 2000 for HP.**

Go to **File>Print PostScript File.**
The **Open** dialog will display. Highlight the PostScript file you wish to print. Click **Open**



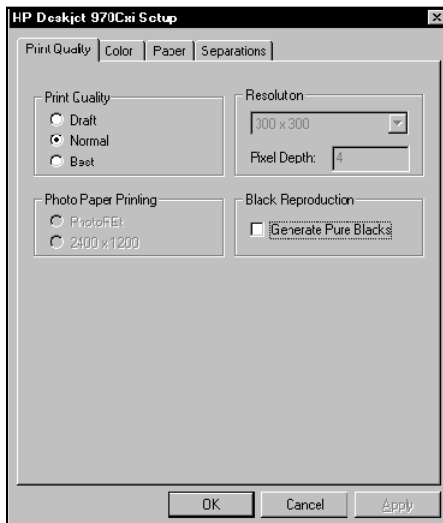
Step 10:

The Configure Document Specs dialog will display.
Make sure your printer is correct in **Printer.**
Make sure the correct port is selected in **On.**
Click **Specify Settings.**



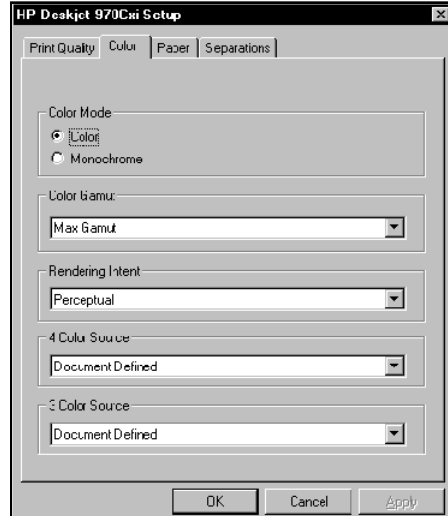
Step 11:

The Setup Dialog will display.
Print Quality tab
Select the appropriate **Resolution,** and **Print Quality.** Select Photo Paper Printing and Black Reproduction if applicable.



Step 12:

Color tab
Select **Color Mode.**
Select the features appropriate for your needs.
Do not leave any of the features as Printer Default. Define every feature.

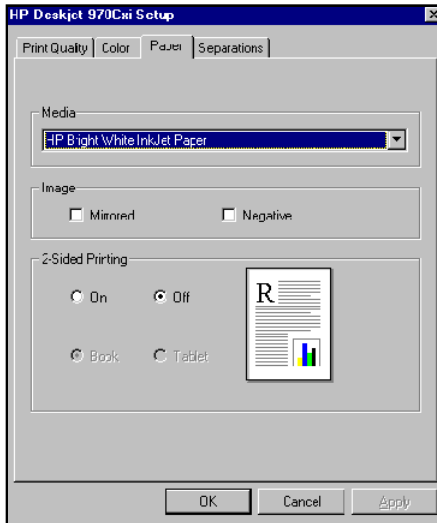


Printing to PowerRIP 2000 from PageMaker 6.5 using NT 4 (Cont)

Step 13:

Paper tab

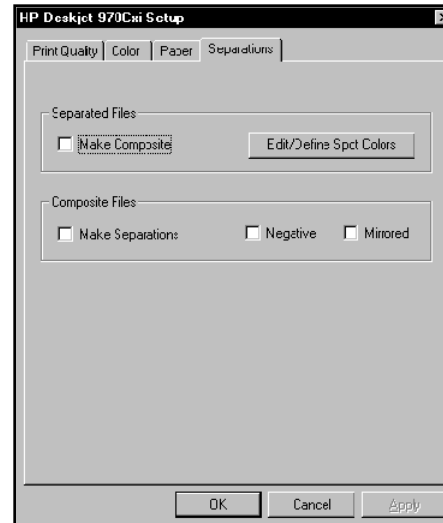
Select the correct media.



Step 14:

Separation tab

Select **Make Composite**.



Click **OK**.

Click **OK**.

The file will process and print.