

Printing to PowerRIP 2000 from Photoshop 5.x using Win 95/98

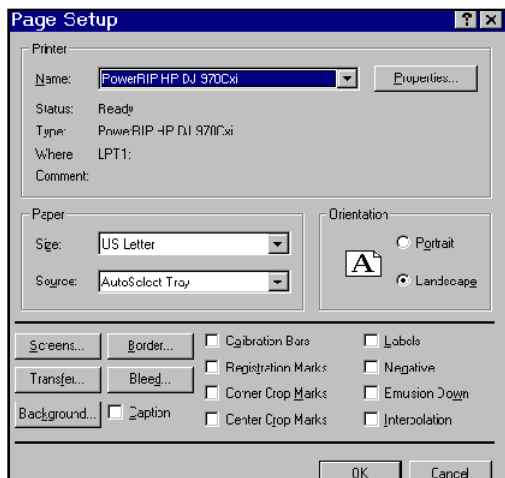
Note: It is assumed that Photoshop file is on the screen and ready to be printed.

Step 1:

File>Page Setup

The Page Setup dialog will display.

Select your **printer** in the Name pulldown.
Select the appropriate **paper size** in the Size pull down.



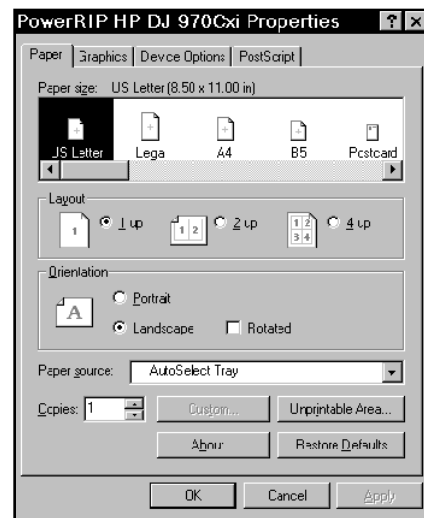
Step 2:

Click **Properties** in the top right corner of the dialog.

The PowerRIP 2000 Properties dialog will display.

Paper tab

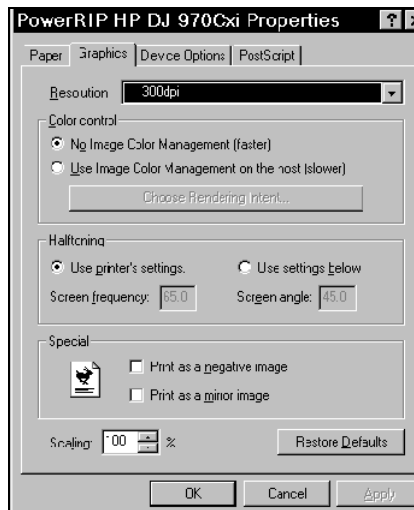
Select the appropriate **Paper Size**.



Step 3:

Graphic tab

Select the appropriate **resolution**.




Printing to PowerRIP 2000 from Photoshop 5.x using Win 95/98 (Cont)

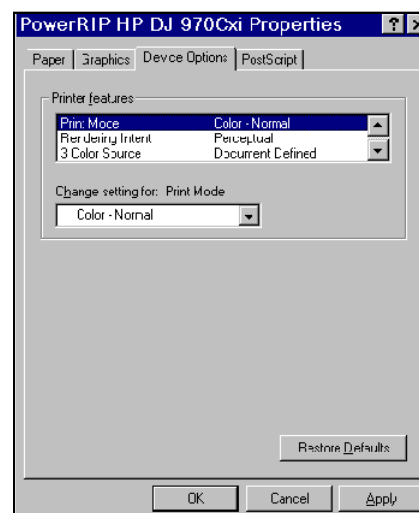
Step 4:

Device Options tab

Select the features appropriate for your needs. This is a scrollable dialog. Do not leave any of the features as Printer Default. Define every feature.

Note: Many of these Device Options interact with each others, and if you attempt to use an option that has this symbol: , a Conflict Window will appear.

Print Mode	can be set to Color-Normal, Color-Draft, Color-Best, Color-PhotoREt, Monochrome-Normal, Monochrome-Draft, and Monochrome-Best.
Rendering Intent	should be set to Perceptual. Absolute, Relative Saturation, and Colorimetric are not presently available.
3 Color Source	should be set to reflect the monitor used to create the image. Use Document default if none of the other options apply.
4 Color Source	should be set to SWOP Simulated.
Make Composite From	should be Yes if you are printing a composite.
Make Separations	should be No unless you are printing a separation.
Mirror Image	should be No unless you wish to print a mirror image.
Negative Image	should be No unless you wish to print a negative image.
Color Gamut	should be set to SWOP Simulated.
Paper Type	should be set to match the paper you have in the printer.
Generate Pure Black	should be selected if you do not want the black to be created using C, M, and Y.
Duplexing	should be No unless you wish to print two sided output.
Screening	should be set to Stochastic.



Click **OK**. Click **OK**.

If this is the first file you are sending, PowerRIP 2000 will automatically launch, process, and print.

Auto launch will only happen if you have installed PowerRIP 2000 on your c:\ drive. If it is installed on any other drive, you will have to manually launch. To manually launch go to Start>Programs>PowerRIP 2000 HP>PowerRIP 2000 for HP.