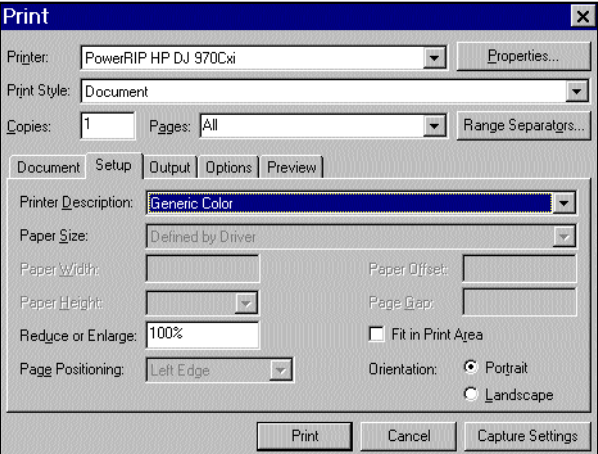
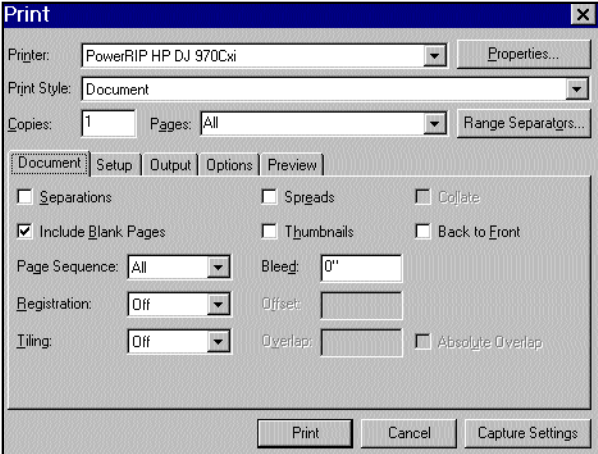
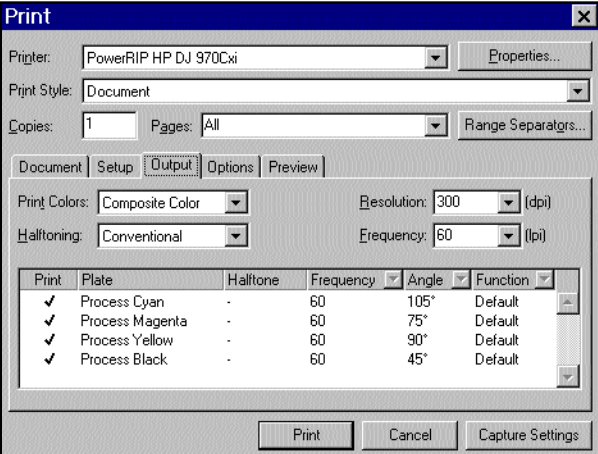
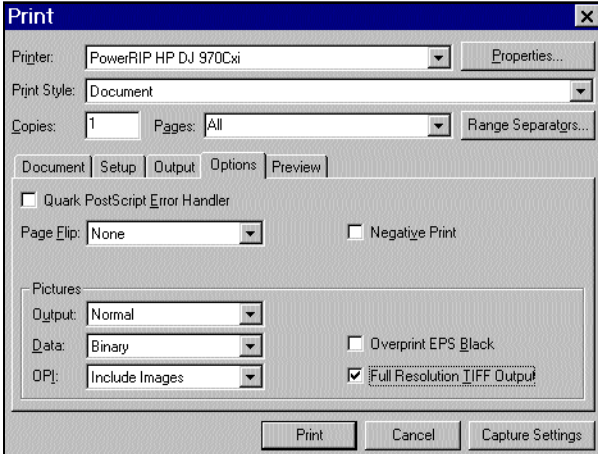


# Printing to PowerRIP 2000 from QuarkXPress 4.x using Win 95/98

**Note:** It is assumed that a QuarkXPress file is on the screen and ready to be printed.

<p style="text-align: center;"><b>Step 1:</b></p> <p><b>File&gt;Page Setup</b> The Print dialog will display. <b>Setup tab</b> Select your printer in <b>Printer</b> Select Generic Color in <b>Printer Description</b> Select the correct <b>Paper Size</b></p> 	<p style="text-align: center;"><b>Step 2:</b></p> <p><b>Document tab</b> Deselect <b>Include Blank Pages</b></p> 
<p style="text-align: center;"><b>Step 3:</b></p> <p><b>Output tab</b> Select <b>Composite Color</b> in Print Colors</p> 	<p style="text-align: center;"><b>Step 4:</b></p> <p><b>Options tab</b> Select <b>Normal</b> in Output Select <b>Binary</b> in Data Select <b>Full Resolution TIFF Output</b></p> 

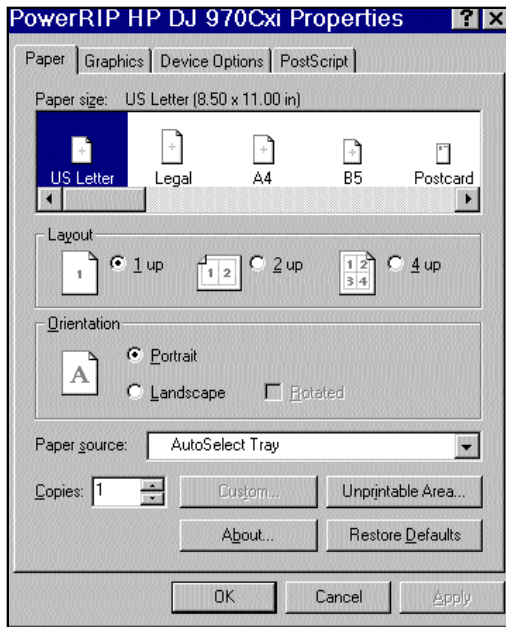
# Printing to PowerRIP 2000 from QuarkXPress 4.x using Win 95/98 (Cont)

## Step 5:

Click **Properties** in the top right corner of the Print dialog.

### Paper tab

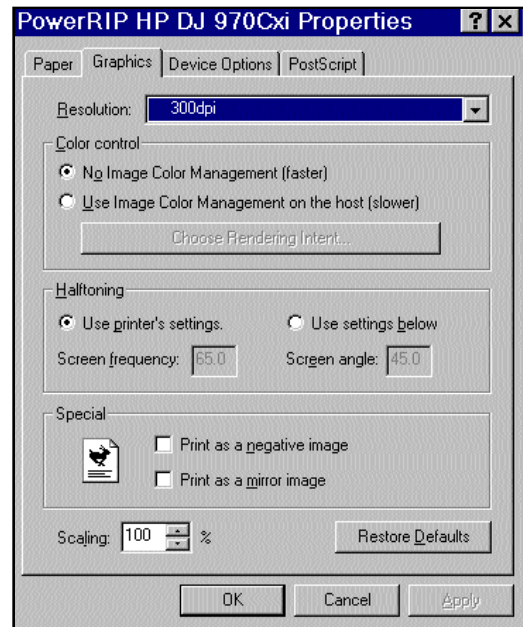
Select your Paper Size



## Step 6:

### Graphics tab

Select the correct **resolution**



## Step 7:

### Device Options tab

Select the features appropriate for your needs. This is a scrollable dialog. Do not leave any of the features as Printer Default. Define every feature.

#### Print Mode

can be set to Color-Normal, Color-Draft, Color-Best, Color-PhotoREt, Monochrome-Normal, Monochrome-Draft, and Monochrome-Best.

#### Rendering Intent

should be set to Perceptual. Absolute, Relative Saturation, and Colorimetric are not presently available.

#### 3 Color Source

should be set to reflect the monitor used to create the image. Use Document default if none of the other options apply.

#### 4 Color Source

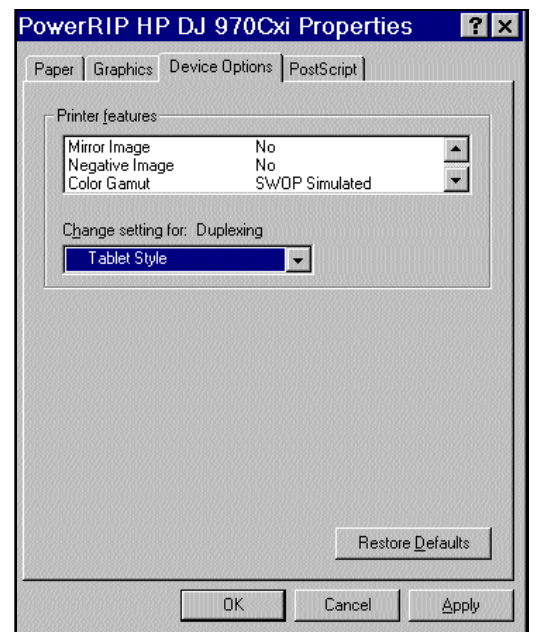
should be set to SWOP Simulated.

#### Make Composite From

should be Yes if you are printing a composite.

# Printing to PowerRIP 2000 from QuarkXPress 4.x using Win 95/98 (Cont)

<b>Make Separations</b>	should be No unless you are printing a separation.
<b>Mirror Image</b>	should be No unless you wish to print a mirror image.
<b>Negative Image</b>	should be No unless you wish to print a negative image.
<b>Color Gamut</b>	should be set to SWOP Simulated.
<b>Paper Type</b>	should be set to match the paper you have in the printer.
<b>Generate Pure Black</b>	should be selected if you do not want the black to be created using C, M, and Y.
<b>Duplexing</b>	should be No unless you wish to print two sided output
<b>Screening</b>	should be set to Stochastic.



## Step 8:

Click **OK**.

Click **Print**.

If this is the first file you are sending, PowerRIP 2000 will automatically launch, process, and print.

Auto launch will only happen if you have installed PowerRIP 2000 on your c:\ drive. If it is installed on any other drive, you will have to manually launch. To manually launch go to Start>Programs>PowerRIP 2000 for HP>PowerRIP 2000 for HP.