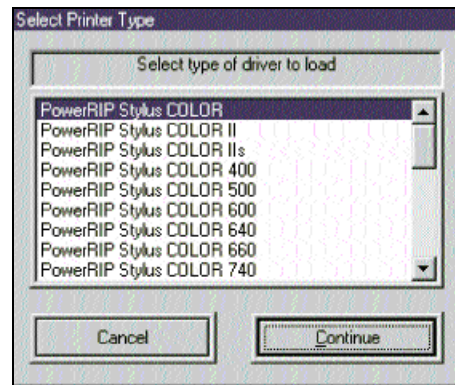
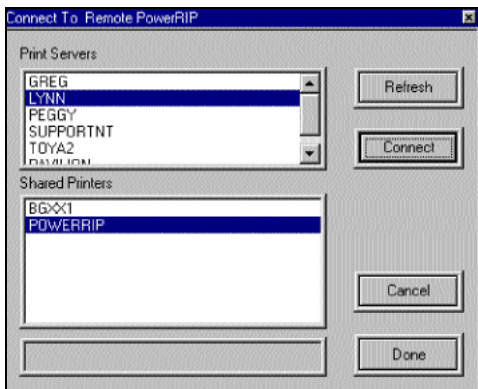


Printing to PowerRIP 2000 from Windows 98 Client to Windows 98 Server

Note: It is not wise to have a screen saver on the server PC. Certain screen savers, when in the sleep mode, can affect the ability of the client PC to access the server PC.

<p style="text-align: center;">Step 1:</p> <p>Install PowerRIP 2000 on Win 98 Server: Insert the PowerRIP 2000 CD into the CD drive. When the splash screen displays Install PowerRIP 2000 on the Win 98 Server using the Quick Start directions.</p>	<p style="text-align: center;">Step 2:</p> <p>Win 98 Server: Validate PowerRIP 2000 on the Server using the Quick Start directions.</p>
<p style="text-align: center;">Step 3:</p> <p>Win 98 Server: After installation and validation go to Start>Settings>Printers. Highlight the printer. Go to File>Properties. Go to the Sharing tab. Select Shared As.</p>	<p style="text-align: center;">Step 4:</p> <p>Connect to Remote PowerRIP 2000 on Win 98 Client: Insert the PowerRIP 2000 CD into the CD drive. When the splash screen displays Install Remote Printer Queue on the Win 98 client.</p>
<p style="text-align: center;">Step 5:</p> <p>Win 98 Client: The Connect to Remote PowerRIP dialog will display. Highlight the Server in the Print Server portion of the dialog. Highlight the PowerRIP in the Shared Printers portion of the dialog. Note: The name you choose should be the same name as the Shared Name in Step 3. Click Connect.</p>	<p style="text-align: center;">Step 6:</p> <p>Win 98 Client: Select your printer in the Select Printer Type dialog box. Click Continue.</p>



Printing to PowerRIP 2000 from Windows 98 Client to Windows 98 Server (Cont)

Step 7:

Win 98 Client:

You will get the message that installation was successful.

Note: If you try to install the same driver twice on the same client machine you could get the error "Adding Printer\xxxx\PowerRIP error 1802 (xxxx - being the server name)

Click **Done**.

Click **Exit**.

Remove the PowerRIP 2000 CD.

Step 8:

Printing from Client to Server:

The application you wish to print from should be launched and the file you wish to print should be on the screen of the client PC.

Note: For this demonstration the server is called Lynn and the printer is the 1520.

Step 1Q:

Printing from QuarkXPress 4.x:

File>Print

The **Printer Setup** dialog will display.

Select your server. (For this demonstration we select PowerRIPon\\LYNN\PowerRIP)

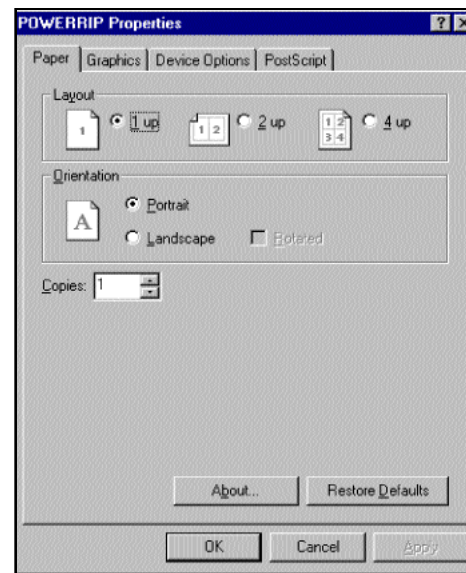
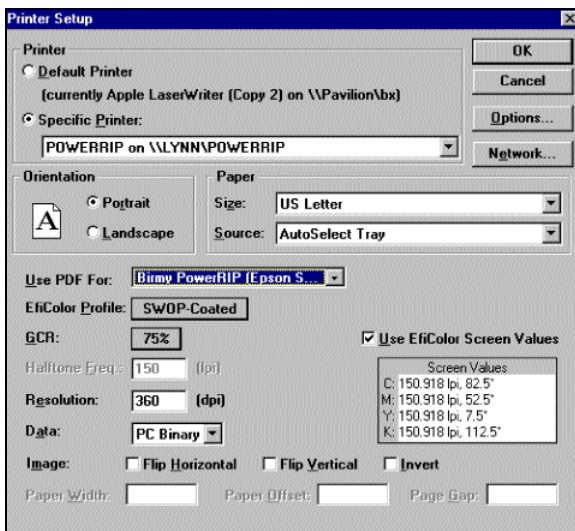
In **Use PDF for** select the correct PPD for your printer.

Step 2Q:

QuarkXPress 4.x:

Click **Options**.

Select the correct layout, orientation, and number of copies in the **Paper** tab.

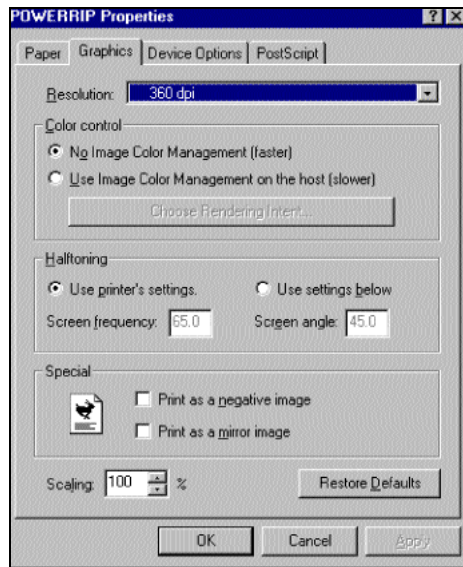


Printing to PowerRIP 2000 from Windows 98 Client to Windows 98 Server (Cont)

Step 3Q:

QuarkXPress 4.x:

Select your resolution in the **Graphics** tab.



Step 4Q:

QuarkXPress 4.x:

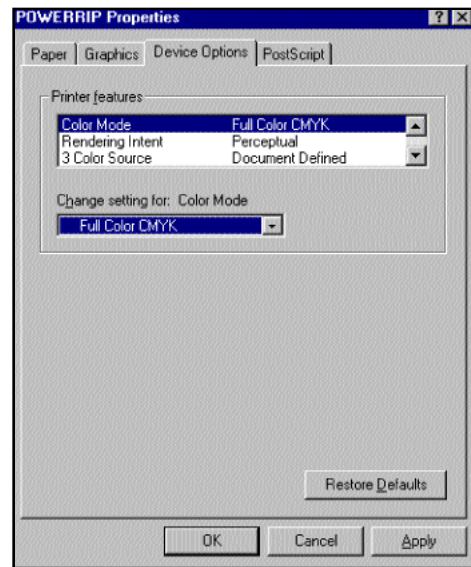
Select **Device Options** tab.

In 4 Color Source select **SWOP Simulated**.

Select the **Paper Type**.

Click **OK**.

Click **OK**.



Step 5Q:

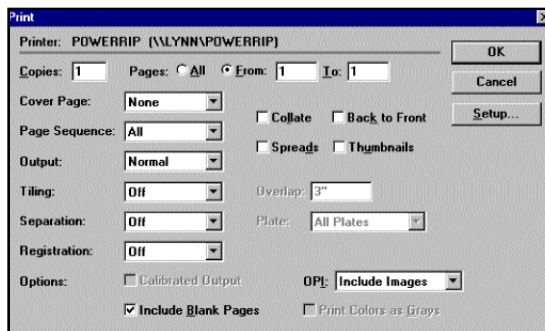
QuarkXPress 4.x:

File>Print

Select the pages you wish to print.

Click **OK**.

The file will spool to the server, process, and print.



Printing to PowerRIP 2000 from Windows 98 Client to Windows 98 Server (Cont)

Step 1PM:

Copy PPD to PageMaker:

Before you can print from PageMaker you must copy the appropriate PPD for your printer to the appropriate PageMaker folder.

Highlight the appropriate PPD in:

PRPC2000EPSON>Ppd>US

and Copy it.

Paste the PPD you just copied to:

PM65>RSRC>USEGLISH>PPD4

Note: Make sure you copy the PPD and not the SPD.

Step 2PM:

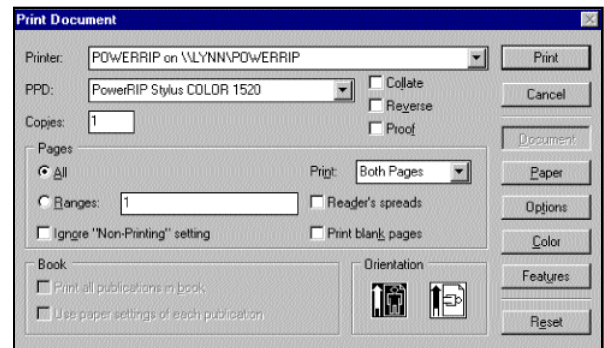
Printing from PageMaker:

File>Print

The **Print Document** dialog will display.

Select your server in **Printer:**

Select the correct PPD for your printer in **PPD:**



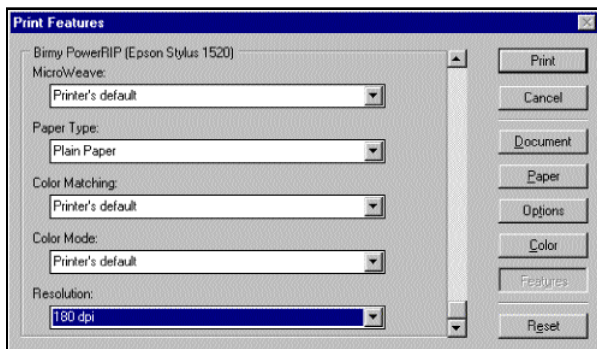
Step 3PM:

Printing from PageMaker:

Click **Features**.

Select your **Paper Type** and **Resolution**.

Note: This is a scrollable window.



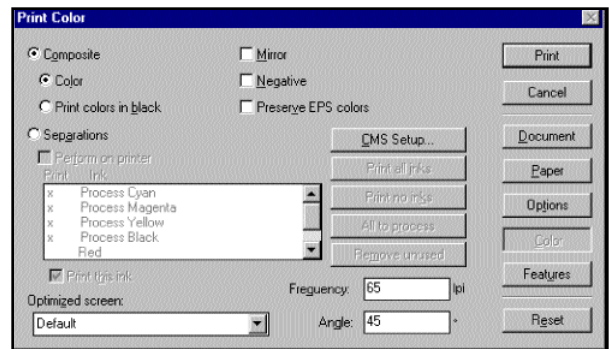
Note: Do not leave any of the features as Printer defaults. Select the features appropriate for your needs.

Step 4PM:

Printing from PageMaker:

Click **Color**.

Select **Composite Color**.



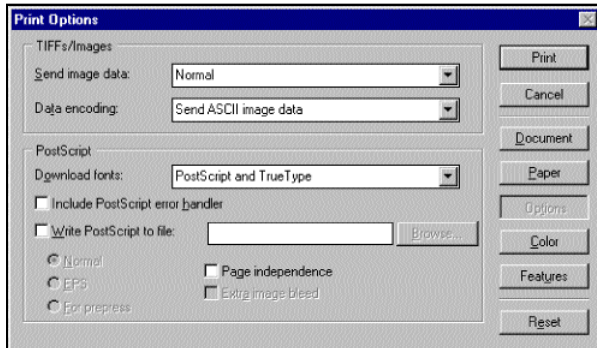
Printing to PowerRIP 2000 from Windows 98 Client to Windows 98 Server (Cont)

Step 5PM:

Printing from PageMaker:

Click **Options**.

Select **Normal** in Send Image Data.



Step 6PM:

Printing from PageMaker:

Click **Print Paper**.

Select your **Paper Size**.

Click **Print**.

