

Printing to PowerRIP 2000 from InDesign using Win 95/98

Note: This document assumes that an InDesign file is on the PC screen and is ready to be processed and printed.

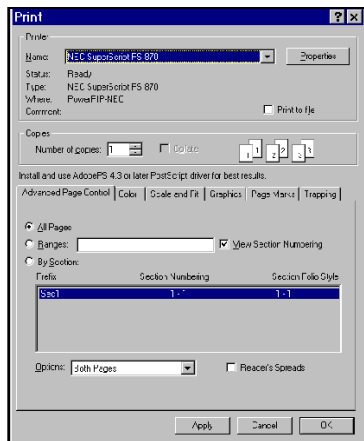
Step 1:

File>Print

The **Print** dialog will display.
Make sure the correct printer is selected in Name.

Advanced Page Control tab

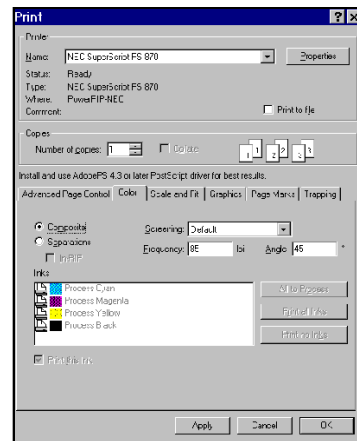
Select the pages you wish to print.



Step 2:

Color tab

Select **Composite Color**.
Click **Apply**.

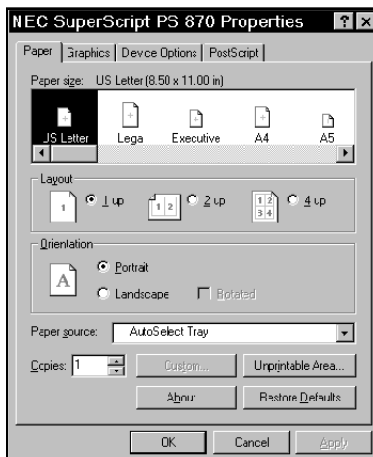


Step 3:

Click **Properties**.
The **NEC SuperScript Properties** dialog will display.

Paper tab

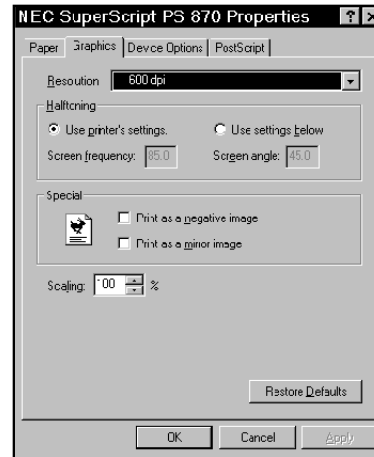
Select the appropriate **Page Size**.



Step 4:

Graphics tab

Select the appropriate **Resolution**.



Printing to PowerRIP 2000 from InDesign using Win 95/98 (Cont)

Step 5:

Device Options tab

Select the features appropriate for your needs.

The Printer Features include: Separations, Color to Monochrome Mapping, Paper Type, and Screening.

Click **OK**.

Click **OK**.

The file will process and print.

