

# Printing to PowerRIP 2000 from Macintosh Client to Windows NT Server

*Note: - To print from a Macintosh client to a Windows PowerRIP 2000 server, you must be running under Windows NT Server 4.0 with Services for Mac installed. or Windows 2000 Professional.*

- *The Macintosh's and PC have to be on the network and the Macintosh's have to be able to see the PC in the Chooser.*
- *If you are going to print to the PC server from a Macintosh client, you must copy the appropriate Windows PPD to the Macintosh. When NEC SuperScript PowerRIP 2000 is installed on your hard drive a folder called PPD is also installed in that folder.*

## Step 1: Copy the Windows PPD to your Macintosh Operating System:

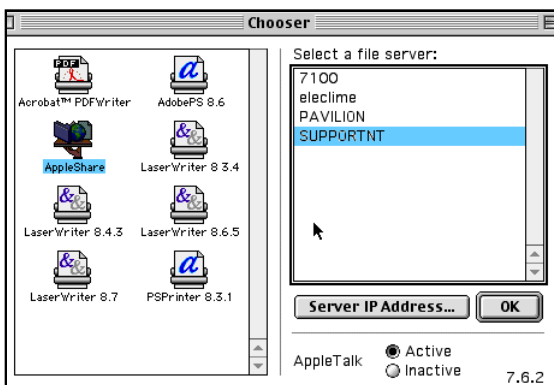
Go to your **Chooser**.

Highlight **AppleShare**. The name of your PC server should display on the right side of the Chooser dialog under **Select a file server:**

*Note: If you can not see the server then you can go no further. Check your network to discover why you cannot see the server. Check to make sure you have rights to access the server. If the server is an NT system make sure that Services for Mac have been installed.*

Highlight the server name.

Click **OK**.



## Step 2: Connect to File Server:

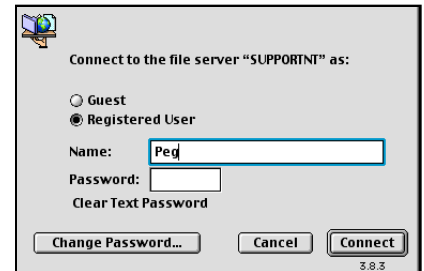
The **Connect to File Server** dialog will display.

Select **Registered User**.

Type the appropriate **Name** and **Password** if applicable.

Click

**Connect**.

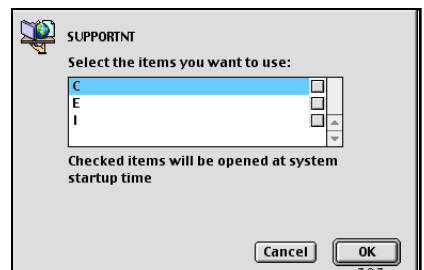


A dialog will display allowing you to select the drive that the PowerRIP 2000 is installed on.

Highlight the drive and click **OK**.

Close the Chooser.

The drive you selected will be mounted on the Macintosh desktop.



# Printing to PowerRIP 2000 from Macintosh Client to Windows NT Server (Cont)

## Step 4:

Open the PC hard drive mounted on your Macintosh.

- Navigate to the PowerRIP 2000 folder.
- Open it.
- Open the PPD folder.
- Open the US folder.
- Highlight the appropriate PPD for your printer.

*Note: Select the PPD. Do not select the SPD.*

Go to **Edit** and select **Copy**.  
Go to your Macintosh **System Folder>Extensions Folder>Printer Descriptions Folder**.

- Open the Printer Descriptions folder.
- Do an **Edit>Paste**.
- The PC PPD will copy to your Printer Description folder.

The Macintosh is ready to print to the PowerRIP 2000 on the NT Server. You can use either LaserWriter or AdobePS to Print to the server.

Now you must make your PowerRIP 2000 available to the Macintosh by sharing the printer.

### PPD's in the PowerRIP 2000 PPD Folder:

PPD Name	Printer
Ip nec126.ppd	NEC SuperScript 1260
Ip nec870.ppd	NEC SuperScript 870

### Direct Print:

There are two methods that you can use to print to your PowerRIP 2000 server. Depending on your network, and the application you are using, you can either **Print to File** or do a direct **Print**. Applications such as FreeHand must use Print to File.

You must share the PowerRIP 2000 printer on your NT server.

Go **Start>Settings>Printers**.

The Printer dialog will display.

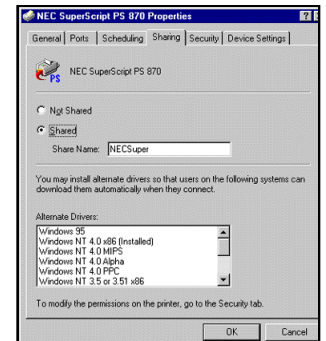
- Highlight your printer.
- Double click on the highlighted printer.



The PowerRIP 2000 Properties dialog will display.

### Sharing tab

- Select **Shared**.
- Click **OK**.
- Close the Printer dialog.



### Print a File from the Macintosh:

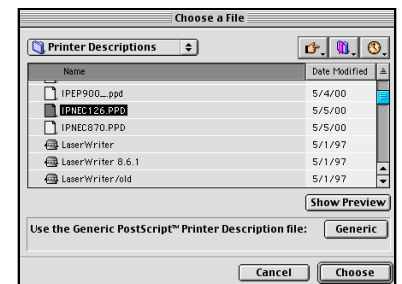
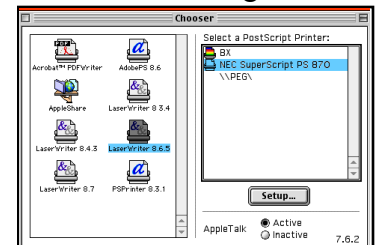
With your file on the Macintosh screen go to the Chooser.

- Highlight the LaserWriter or AdobePS driver.
- Highlight the printer.

- Click **Setup**.
- Click **Select PPD**.

The **Choose a File** dialog will display.

- Highlight the appropriate PPD.
- Click **Choose**.
- Click **OK**.
- Close the Chooser.



# Printing to PowerRIP 2000 from Macintosh Client to Windows NT Server (Cont)

When you click **Print** in the Print dialog, the PostScript file will spool across the network, drop into the Printer queue, process, drop into the BGXX1 queue, and print.

*Note: Read Me's for most applications can be found in Documentation. These Read Me's should be referenced for the appropriate setup information for your printer.*

## Print to File:

There are certain circumstances which require that you Print to File. FreeHand is a good example. FreeHand sends header information along with the PostScript file when the print command is executed. This creates various PostScript errors. Print to File circumvents this header information and allows you to print FreeHand files to your printer.

For ease of operation create a new folder on your NT Server hard drive to house your PostScript files.

## File>Print

The **Print** dialog will display.

Select **Print to File**.

Click **OK**.

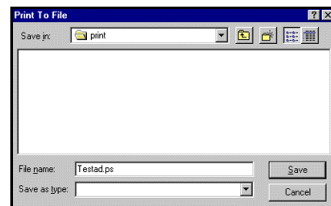
The **Print to File** dialog will display.

Navigate to the folder on your NT server that you want to save the file in.

Give your file a name.

Click **Save**.

The PostScript file will save to the folder.



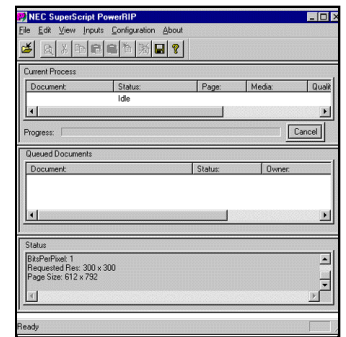
## Print the PostScript file.

Launch PowerRIP 2000.

(Start>Programs>PowerRIP 2000 for NEC Stylus>PowerRIP 2000 for NEC)

Maximize

PowerRIP 2000.



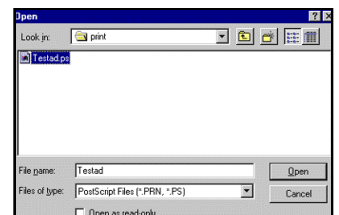
## Go to File>Print PostScript File.

The **Open** dialog will display.

Navigate to the folder you saved your file in.

Highlight the file.

Click **Open**



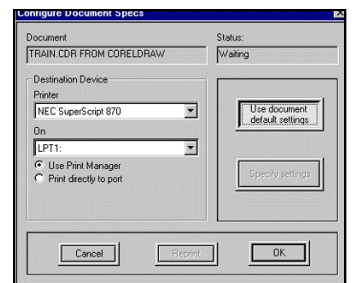
## The **Configure Document Specs** dialog will display.

Make sure the correct printer is selected in Printer.

Make sure the correct LPT port is selected in On.

Select **Use**

**Print Manager**.



Select **Document Default Settings**.

Click **OK**.

The file will process and print.