

Printing to PowerRIP 2000 from PageMaker 6.5 using Win 95/98

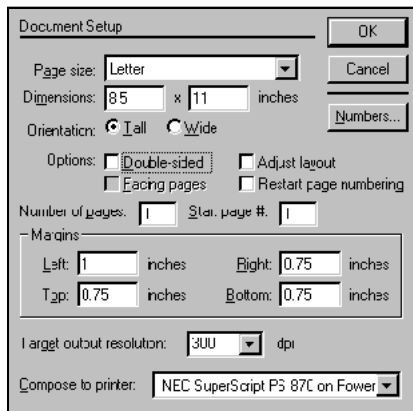
Note: Before you print from PageMaker you must copy the appropriate PPD from **PRPC2000NEC>Ppd>US** to **PM65>RSRC>USENGLISH>Ppd4**. The PPDs are **Ip nec870.ppd** and **Ip nec126.ppd**

It is assumed that a PageMaker 6.5 file is on the screen and ready to be printed.

Step 1:

File>Document Setup

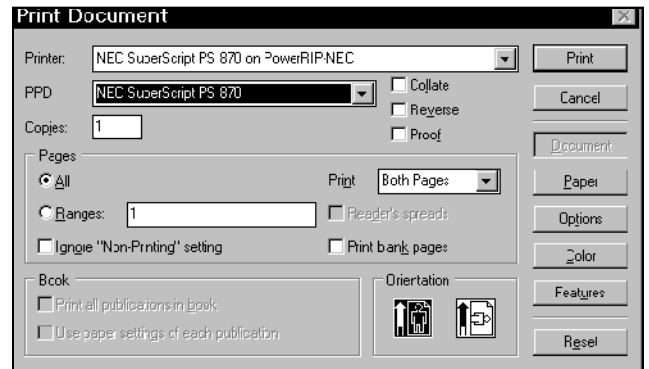
The Document Setup dialog will display.
Select your **Page Size**.
Select your printer in **Compose to Printer**.
Click **OK**.



Step 2:

File>Print

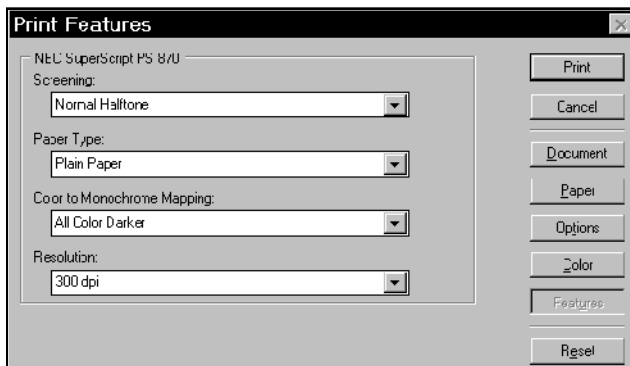
The Print Document dialog will display.
Select your printer in the Printer pull down.
Select the correct PPD.



Step 3:

Click Features

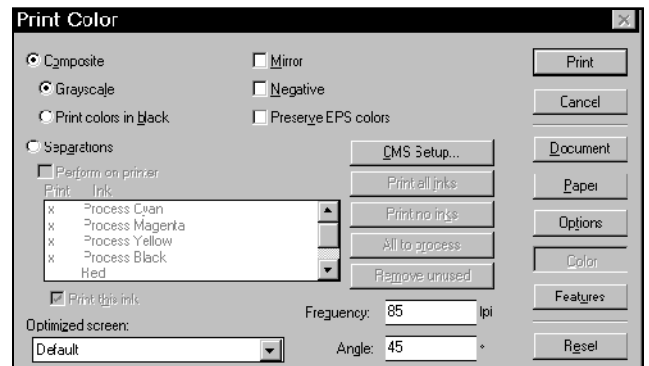
The Print features dialog will display.
Select the **Features** appropriate for your needs.
Do not leave any of the features as Printers Defaults. Define every feature.



Step 4:

Click Color

The Print Color dialog will display.
Select **Composite Color**.

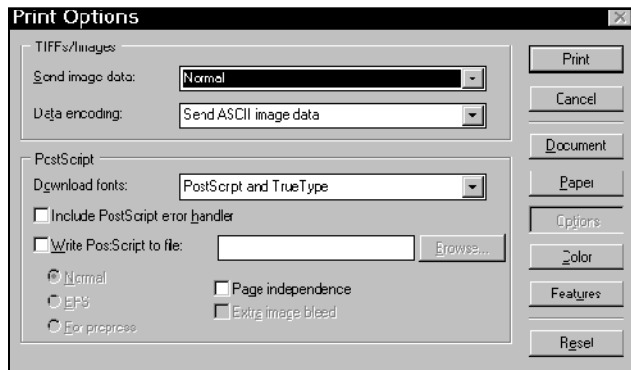


Printing to PowerRIP 2000 from PageMaker 6.5 using Win 95/98 (Cont)

Step 5:

Click **Options**

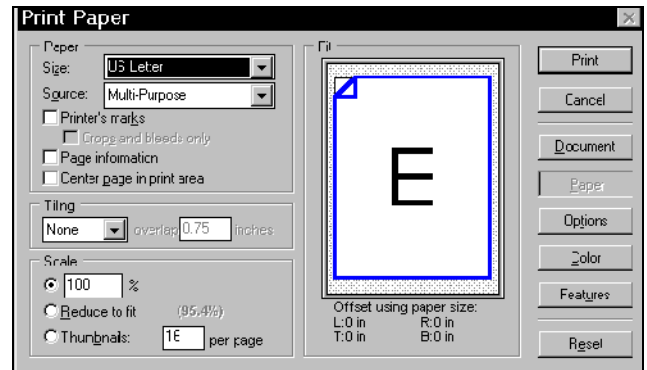
The Print Options dialog will display.
Select **Normal** in the Send Image data pull down.



Step 6:

Click **Paper**

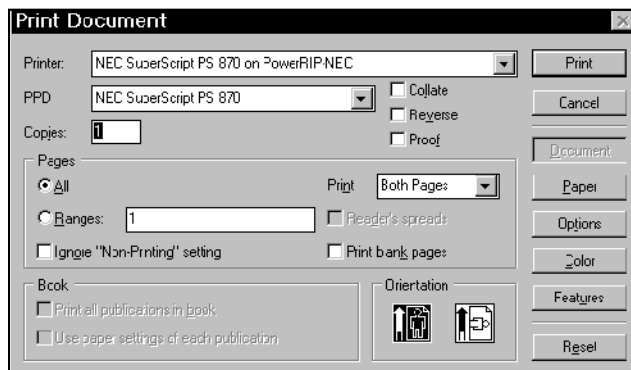
The Print paper dialog will display.
Select the appropriate **paper size** in Size.



Step 7:

Click **Document**

The Print Document dialog will display.
Make sure the correct PPD is still selected in PPD and the correct printer is still selected in Printer.



Step 8:

Click **Print**.

If this is the first file you are sending, PowerRIP 2000 will automatically launch, process, and print.

Auto launch will only happen if you have installed PowerRIP 2000 on your c:\ drive. If it is installed on any other drive, you will have to manually launch. To manually launch go to Start>Programs>NEC SuperScript PowerRIP >NEC SuperScript PowerRIP.