

Printing to PowerRIP 2000 from Photoshop 5.x using Win 95/98

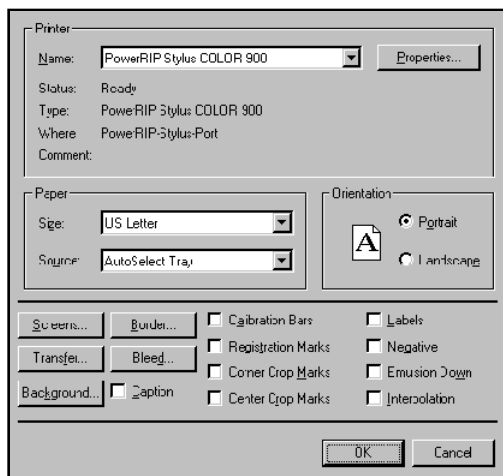
Note: It is assumed that Photoshop file is on the screen and ready to be printed.

Step 1:

File>Page Setup

The Page Setup dialog will display.

Select your **printer** in the Name pulldown.
Select the appropriate **paper size** in the Size pull down.



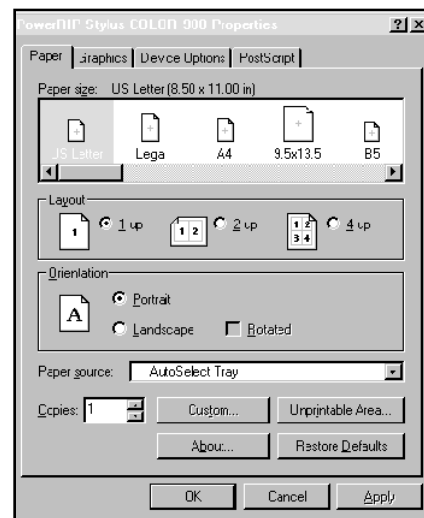
Step 2:

Click **Properties** in the top right corner of the dialog.

The PowerRIP 2000 Properties dialog will display.

Paper tab

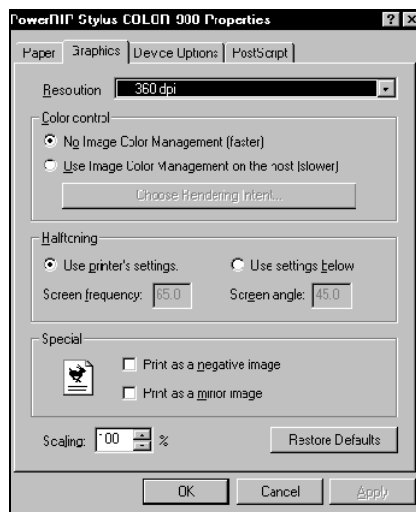
Select the appropriate **Paper Size**.



Step 3:

Graphic tab

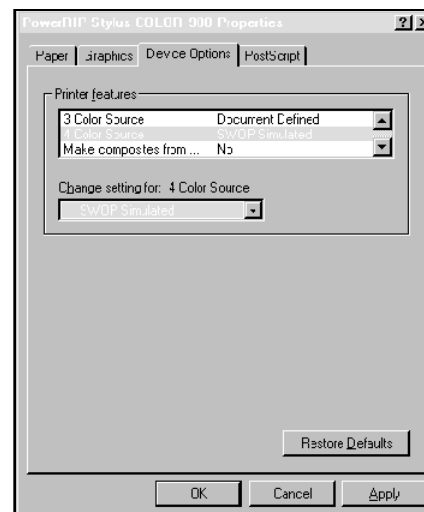
Select the appropriate **resolution**..



Step 4:

Device Options tab

Select the features appropriate for your needs.



Printing to PowerRIP 2000 from Photoshop 5.x using Win 95/98 (Cont)

Step 4: (Cont)

This is a scrollable dialog. Do not leave any of the features as Printer Default. Define every feature. The Printer Features include:

Color Mode	Rendering Intent	Print Direction
3 Color Source	4 Color Source	MicroWeave
Make Composite From	Mirror Image	Screening
Make Separations	Color Gamut	Generate Pure Black
Negative Image	Paper Type	

Click OK.

Click OK.

If this is the first file you are sending, PowerRIP 2000 will automatically launch, process, and print.

Auto launch will only happen if you have installed PowerRIP 2000 on your c:\ drive. If it is installed on any other drive, you will have to manually launch. To manually launch go to Start>Programs>PowerRIP 2000 for Epson>PowerRIP 2000 for Epson Stylus Series.