

Printing to PowerRIP 2000 from Photoshop 5.x using Win NT 4.0

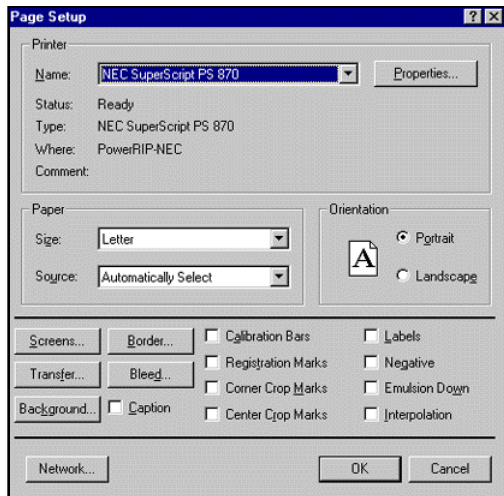
Note: It is assumed that Photoshop file is on the screen and ready to be printed.

Step 1:

File>Page Setup

The Page Setup dialog will display.

Select your **printer** in the Name pull down.
Select the appropriate **paper size** in the Size pull down.



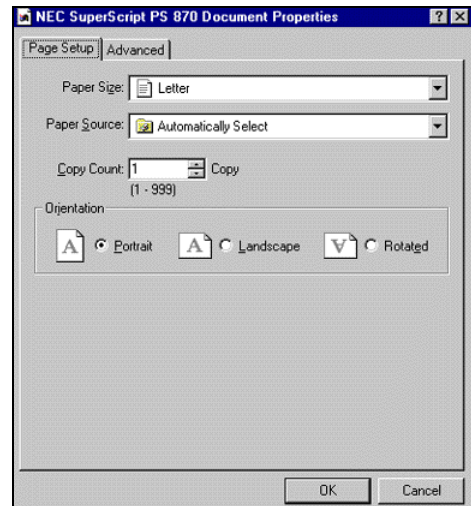
Step 2:

Click **Properties** in the top right corner of the dialog.

The PowerRIP 2000 Properties dialog will display.

Paper Setup tab

Select the appropriate **Paper Size**.



Step 3:

Advanced tab

Select the appropriate settings. This is a scrollable window. The settings include:

Paper/Output

- Page Size
- Orientation
- Paper Source
- Copy Count

Graphic

- Resolution
- Sealing
- TrueType Font

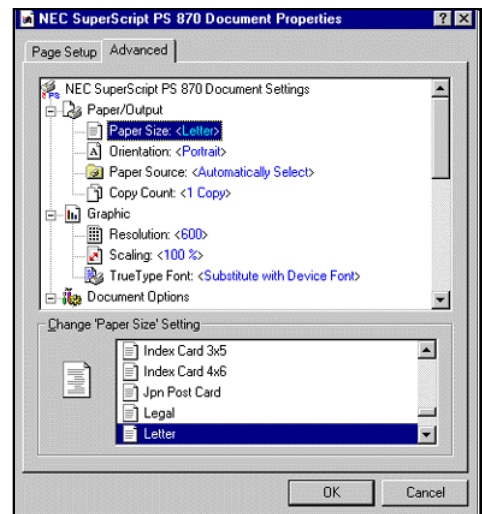
Document Options

- Metafile Spooling
- PostScript Options
- Mirrored Output
- Negative Output
- Page Independent

- Compress Bitmaps
- Generate Job Control Code
- Send CTRL-D Before Each Job
- Send CTRL-D After Each Job
- Halftone Color Adjustment
- Printer Features
- Separations
- Color to Monochrome Mapping
- Paper Tape
- Screening

Click **OK**.

Click **OK**.

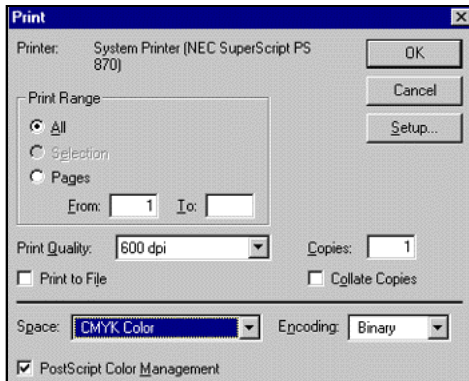


Printing to PowerRIP 2000 from Photoshop 5.x using Win NT 4.0 (Cont)

Step 4:

File>Print

The Print dialog will display.
Click **OK**.



If this is the first file you are sending, PowerRIP 2000 will automatically launch, process, and print.

Auto launch will only happen if you have installed PowerRIP 2000 on your c:\ drive. If it is installed on any other drive, you will have to manually launch. To manually launch go to Start>Programs>NEC SuperScript PowerRIP >NEC SuperScript PowerRIP.