

Printing to PowerRIP 2000 from QuarkXPress 4.x using Win 95/98 & NT 4

Note: It is assumed that a QuarkXPress file is on the screen and ready to be printed.

Step 1:

File>Page Setup

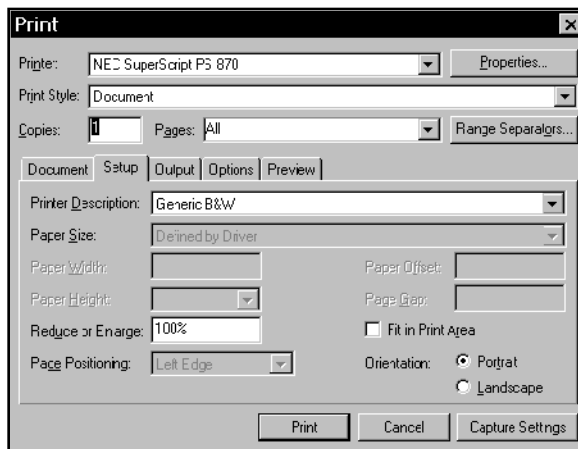
The Print dialog will display.

Setup tab

Select your printer in **Printer**

Select Generic B&W in **Printer Description**

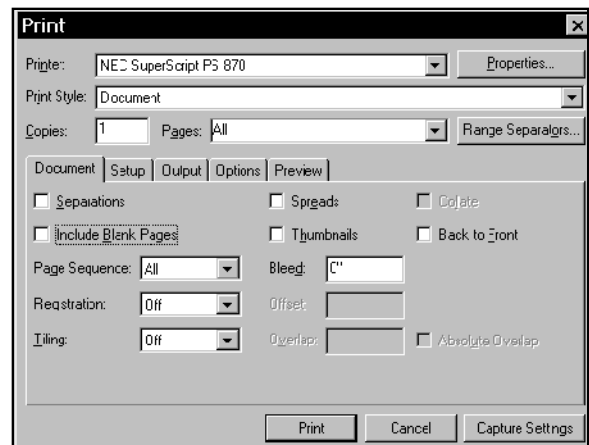
Select the correct **Paper Size**



Step 2:

Document tab

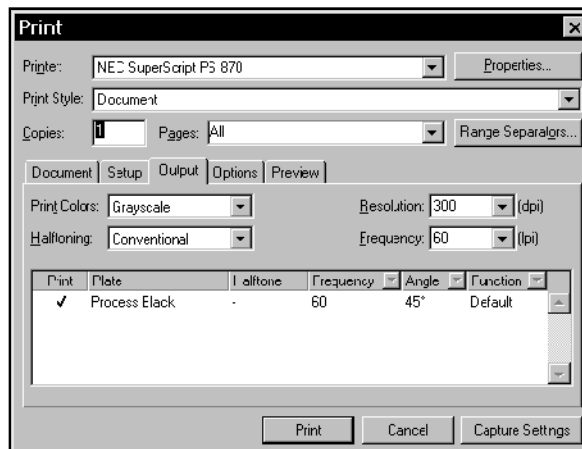
Deselect **Include Blank Pages**



Step 3:

Output tab

Select **Grayscale** in Print Colors



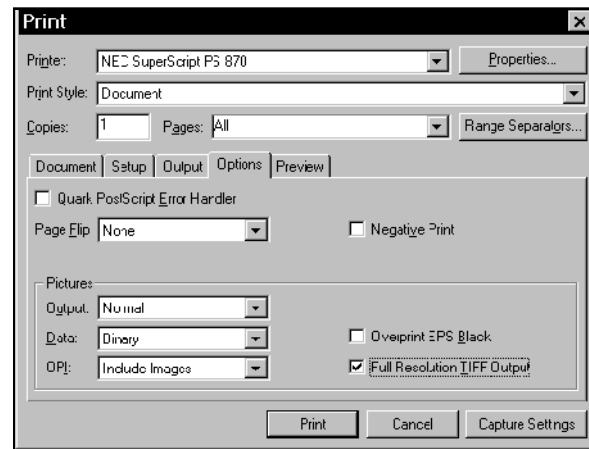
Step 4:

Options tab

Select **Normal** in Output

Select **Binary** in Data

Select **Full Resolution TIFF Output**



Printing to PowerRIP 2000 from QuarkXPress 4.x using Win 95/98 & NT 4 (Cont)

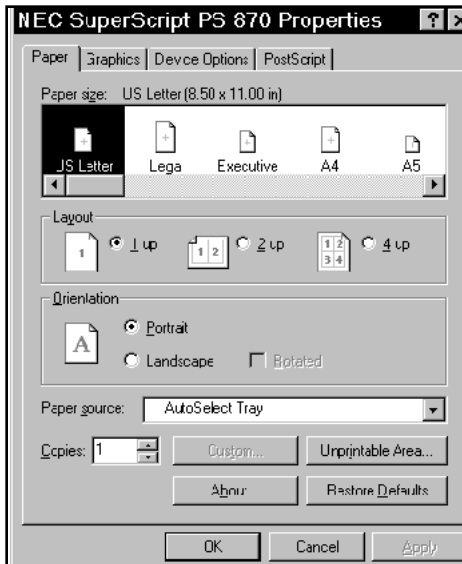
*If using Win 95/98 follow Steps 5, 6, and 7 on this page and then proceed to Step 8 on page 3.
If using NT 4 go to Step 5a and 6b on page 3 and then Step 8*

Step 5:

Click **Properties** in the top right corner of the Print dialog.

Paper tab

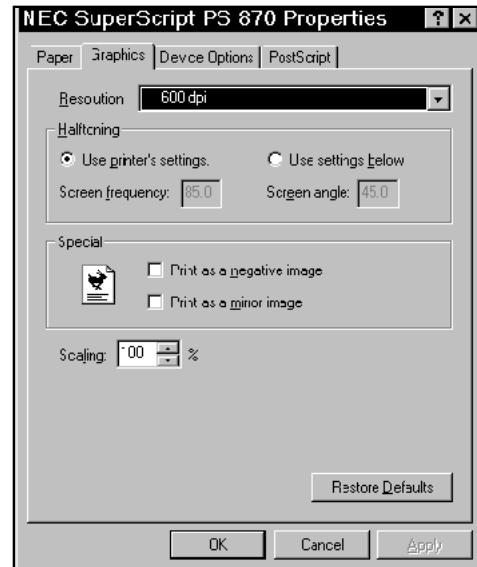
Select your Paper Size



Step 6:

Graphics tab

Select the correct **resolution**



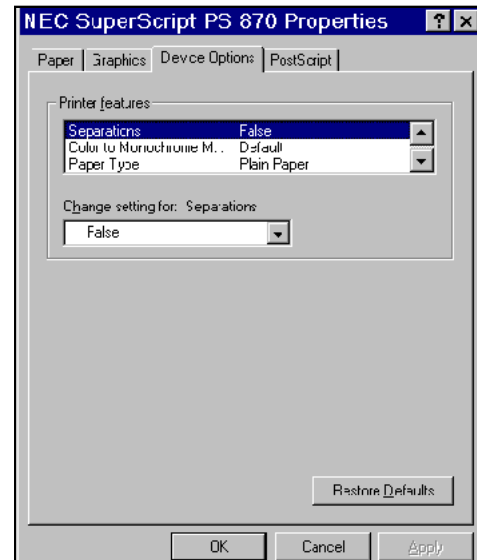
Step 7:

Device Options tab

Select the features appropriate for your needs. This is a scrollable dialog. Do not leave any of the features as Printer Default. Define every feature.

The Printer Features include:

- Separations
- Color to Monochrome
- Paper Type
- Screening



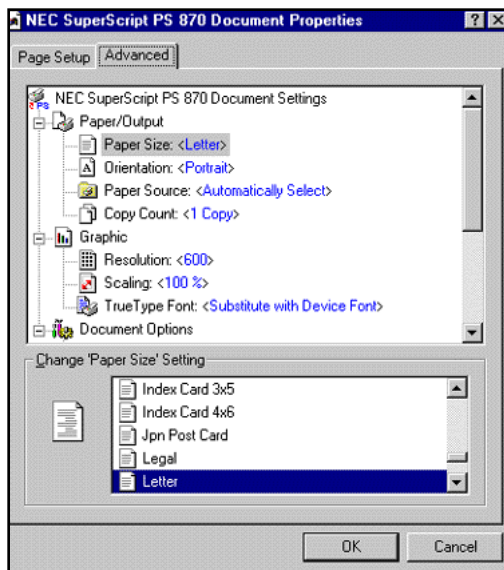
Printing to PowerRIP 2000 from QuarkXPress 4.x using Win 95/98 & NT 4 (Cont)

Step 5a:

Click **Properties** in the top right corner of the Print dialog.

Advanced tab

Select the features appropriate for your needs. This is a scrollable dialog. Do not leave any of the features as Printer Default. Define every feature.

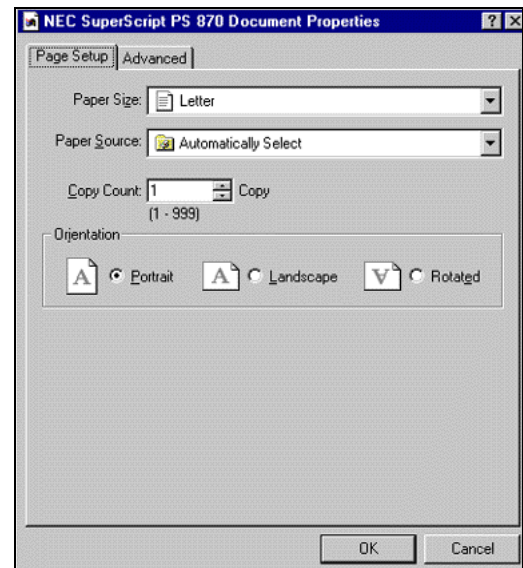


Step 6a:

Page Setup tab

Select your orientation.

Select your paper size.



Step 8:

Click **OK**.

Click **Print**.

If this is the first file you are sending, PowerRIP 2000 will automatically launch, process, and print.

Auto launch will only happen if you have installed PowerRIP 2000 on your c:\ drive. If it is installed on any other drive, you will have to manually launch. To manually launch go to Start>Programs>NEC SuperScript PowerRIP >NEC SuperScript PowerRIP.