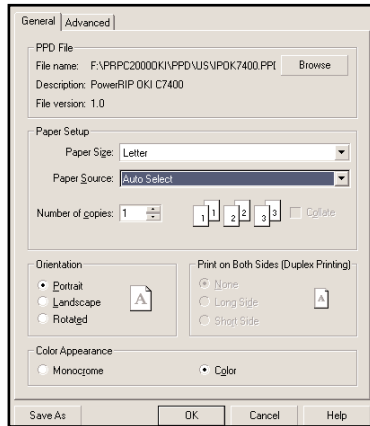


Printing to PowerRIP 2000 from CorelDRAW 9 using Win NT 4, Me, 2000 & 98

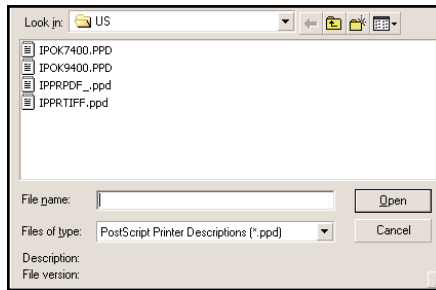
Note: It is assumed that a CorelDRAW 9 file is on the screen and ready to be printed.

Go to **File>Print**
The CorelDraw 9 print dialog will display.
General tab
Select your printer in the Name pull down Select Use **PPD**.

Step 1:



The **Select PPD File** dialog will display.
Navigate to the **PRPC2000>PPD>US** folder on your hard drive.

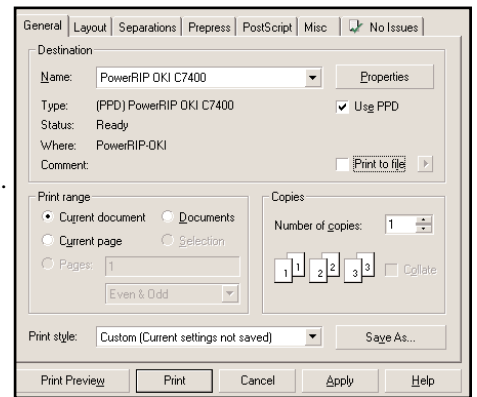


Note: If using Operating System Win Me or 98 select the SPD. If using Win NT or Win 2000 select the PPD. To select the SPD, Files of Type should be All Files.

Select the appropriate PPD or SPD for your printer.
Click **Open**. The Print dialog will redisplay.

Click **Properties**
General tab
Select the appropriate **Paper Size** and **Orientation**.

Step 2:

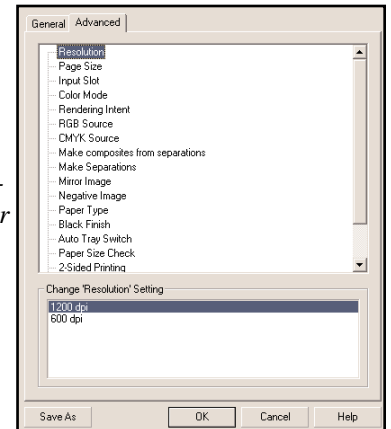


Advanced tab

The **Advanced** properties dialog will display.
Select the properties that are appropriate to your needs.

Note: For an in-depth discussion of all the available features for your printer see Chapter 9 of the PowerRIP 2000 manual.

Click **OK**.



The Print dialog will redisplay.
Click **Print**.

If this is the first file you are printing, PowerRIP 2000 will automatically launch, process, and print.

Auto launch will only happen if you have installed PowerRIP 2000 on your c:\ drive. If it is installed on any other drive, you will have to manually launch. To manually launch go to Start>Programs>PowerRIP 2000>PowerRIP 2000.