

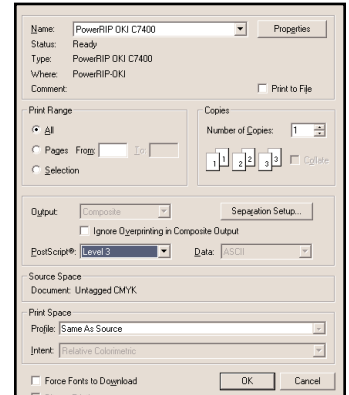
Printing to PowerRIP 2000 from Illustrator 9 using Win 98, NT, Win 2000 & Me

Note: It is assumed that an Illustrator file is on the screen and ready to be printed.

Step 1: Go to File>Print

The Illustrator Print dialog will display.
Select your printer in the Name pull down.

Click **Properties** in the top right corner of the Print dialog.



*If you are using Windows 2000 or NT follow the directions in Step 2a.
If you are using Windows 98 or Me follow the directions in Step 2b.*

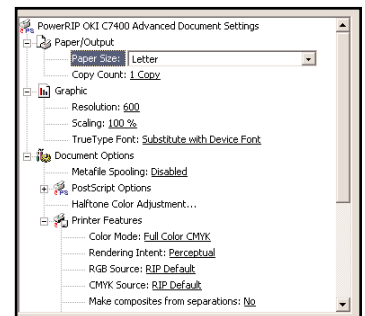
Step 2a: The Document Properties dialog will display.

Click the **Advanced** in the bottom right corner of the dialog. The **PowerRIP Properties** will display.

Select the **Features** appropriate for your needs.
Note: This is a scrollable window.

For an in-depth discussion of all the available features for your printer see Chapter 9 of the PowerRIP 200 manual.

Click **OK**. Click **OK**. Click **OK**.



Step 2b: The PowerRIP Properties will display.

Paper tab

Select the appropriate **Paper Size** and **Orientation**.

Graphics tab

Select the correct **Resolution**.



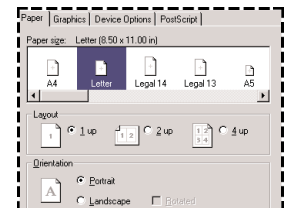
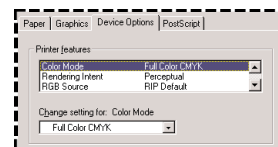
Device Options tab

Note: This is a scrollable window.

Select the **Features** appropriate for your needs.

For an in-depth discussion of all the available features for your printer see Chapter 9 of the PowerRIP 2000 manual.

Click **OK**. Click **OK**.



If this is the first file you are sending, PowerRIP 2000 will automatically launch, process, and print.

Auto launch will only happen if you have installed PowerRIP 2000 on your c:\drive. If it is installed on any other drive, you will have to manually launch. To manually launch go to Start>Programs>PowerRIP 2000>PowerRIP 2000.