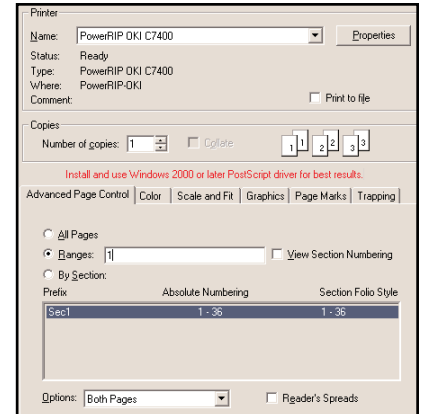


# Printing to PowerRIP 2000 from InDesign using Win 98, 2000, Me, NT

**Note:** This document assumes that an InDesign file is on the PC screen and is ready to be processed and printed.

## Step 1: Go to File>Print

The InDesign **Print** dialog will display.  
Select your printer in the Name pull-down.

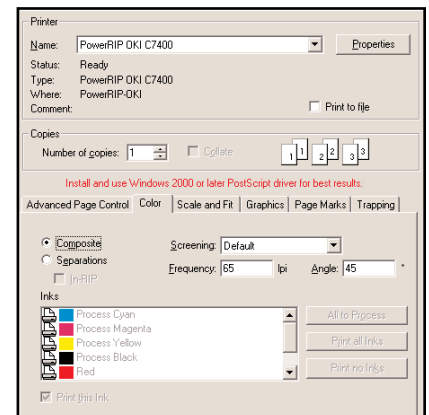


## Step 2: Color tab

Select **Composite**

Click **Properties** in the top right corner of the Print dialog.

*If you are using Windows 2000 or NT follow the directions in Step 3a.  
If you are using Windows 98 or Me follow the directions in Step 3b.*



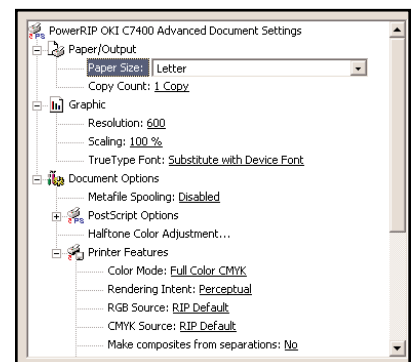
## Step 3a: The Document Properties dialog will display.

Click **Advanced** in the bottom right corner of the dialog.  
The **PowerRIP Advanced Options** will display.

*Note: This is a scrollable window.*

Select the **Features** appropriate for your needs.  
For an in-depth discussion of all the available features for your printer see  
Chapter 9 of the PowerRIP 2000 manual.

Click **OK**.  
Click **OK**.  
Click **OK**.

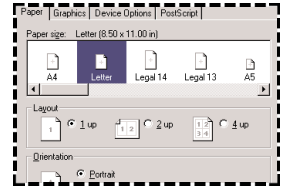


# Printing to PowerRIP 2000 from InDesign using Win 98, 2000, Me, NT (Cont)

**Step 3b:** The **PowerRIP Properties** will display.

## **Paper tab**

Select the appropriate **Paper Size** and **Orientation**.



## **Graphics tab**

Select the correct **Resolution**.

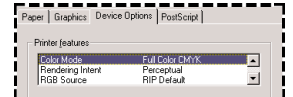


## **Device Options tab**

*Note: This is a scrollable window.*

Select the **Features** appropriate for your needs.

For an in-depth discussion of all the available features for your printer see Chapter 9 of the PowerRIP 2000 manual.



Click **OK**.

Click **OK**.

If this is the first file you are sending, PowerRIP 2000 will automatically launch, process, and print.

Auto launch will only happen if you have installed PowerRIP 2000 on your c:\ drive. If it is installed on any other drive, you will have to manually launch. To manually launch go to Start>Programs>PowerRIP 2000>PowerRIP 2000.