

Printing to PowerRIP 2000 from Macintosh Client to Windows NT Server

Note: - To print from a Macintosh client to a Windows PowerRIP 2000 server, you must be running under Windows NT Server 4.0 with Services for Mac installed. or Windows 2000 Server with Print Server for Mac installed.

- The Macintosh's and PC have to be on the network and the Macintosh's have to be able to see the PC in the Chooser.
- You cannot use a Macintosh PowerRIP 2000 PPD to print to a PowerRIP 2000 PC server. You also cannot use a PC PowerRIP 2000 PPD to print to a Macintosh. If you are going to print to the PC server from a Macintosh client, you must copy the appropriate Windows PPD to the Macintosh. When PowerRIP 2000 (PC) is installed on your hard drive a folder called PPD is also installed in that folder.

Step 1:

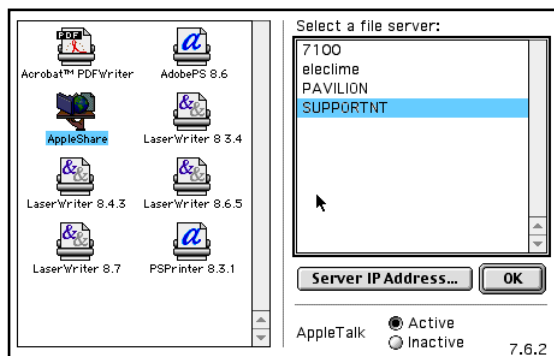
Copy the Windows PPD to your Macintosh Operating System:

Go to your **Chooser**.

Highlight **AppleShare**. The name of your PC server should display on the right side of the chooser dialog under **Select a file server:**

Note: If you cannot see the server then you can go no further. Check your network to discover why you can not see the server. Check to make sure you have rights to access the server. If the server is an NT or Windows 2000 Server system make sure that Services for Mac have been installed.

Highlight the server name.
Click **OK**.



Step 2:

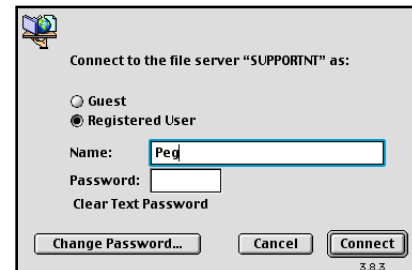
Connect to File Server:

The **Connect to File Server** dialog will display.

Select **Registered User**.

Type the appropriate **Name** and **Password** if applicable.

Click **Connect**.



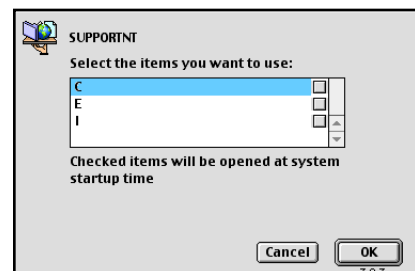
Step 3:

A dialog will display allowing you to select the drive that the PowerRIP 2000 is installed on.

Highlight the drive and click **OK**.

Close the Chooser.

The drive you selected will be mounted on the Macintosh desktop.



Printing to PowerRIP 2000 from Macintosh Client to Windows NT Server (Cont)

Step 4:

Open the PC hard drive mounted on your Macintosh.

Navigate to the PowerRIP 2000 folder.

Open it.

Open the PPD folder.

Open the US folder.

Highlight the appropriate PPD for your printer.

Note: Select the PPD. Do not select the SPD.

Go to **Edit** and select **Copy**.

Go to your Macintosh **System Folder> Extensions> Printer Descriptions**.

Open the Printer Descriptions folder.

Do an **Edit>Paste**.

The PC PPD will copy to your Printer Description folder.

The Macintosh is now ready to print to the PowerRIP 2000 on the NT or Windows 2000 Server. You can use either LaserWriter or AdobePS to Print to the server.

Now you must make your PowerRIP 2000 available to the Macintosh by sharing the printer.

Step 5:

There are two methods that you can use to print to your PowerRIP 2000 server. Depending on your network, and the application you are using, you can either **Print to File** or do a direct **Print**. Applications such as FreeHand must use Print to File.

Note: See FreeHand Read Me for printing directions.

Direct Print

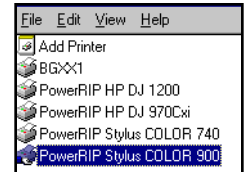
You must share the PowerRIP 2000 printer on your NT or Windows 2000 server.

Go **Start>Settings>Printers**.

The Printer dialog will display.

Highlight your printer.

Double click on the highlighted printer.



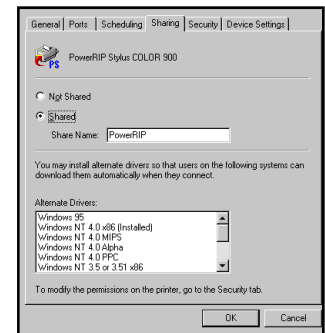
The PowerRIP 2000 Properties dialog will display.

Sharing tab

Select **Shared**.

Click **OK**.

Close the Printer dialog.



Step 6:

Print a File from the Macintosh:

With your file on the Macintosh screen go to the Chooser.

Highlight the

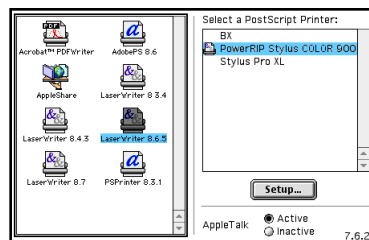
LaserWriter or

AdobePS driver.

Highlight the printer.

Click **Setup**.

Click **Select PPD**.



The **Choose a File** dialog will display.

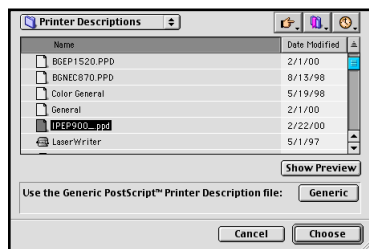
Highlight the appropriate PPD.

Click **Choose**.

Click **OK**.

Close the

Chooser.



When you click **Print**

in the Print dialog, the file will spool across the network, drop into the Printer, process, drop into the BGXX1 queue, and print.

Note: Read Mes for most applications can be found in the Docs folder on the PowerRIP 2000 CD. These Read Mes should be referenced for the appropriate setup information for your printer.

Print to File:

There are certain circumstances which require that you Print to File. FreeHand is a good example. Freehand sends header information along with the PostScript file when the print command is executed. This creates various PostScript errors. Print to File circumvents this header information and allows you to print FreeHand files to your printer.

For ease of operation create a new folder on your NT Server hard drive to house your PostScript files. When you do a **File>Print** the **Print** dialog will display. Select **Print to File**.