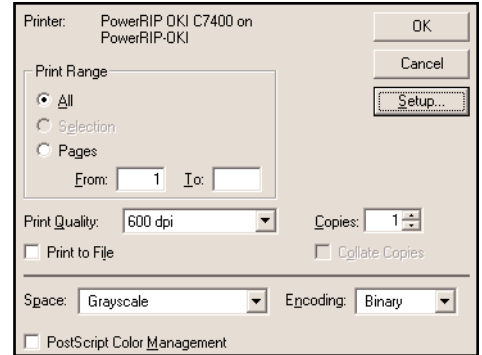


Printing to PowerRIP 2000 from Photoshop 5.x using Win NT, Me, 2000 & 98

Note: It is assumed that a Photoshop file is on the screen and ready to be printed.

Step 1: Go to File>Print.

The Photoshop Print dialog will display.



Step 2: Click Setup.

The **Page Setup** dialog will display.

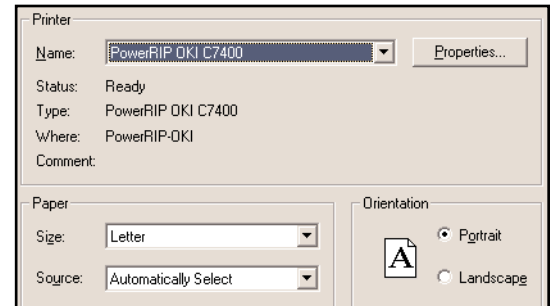
Select your printer in the Name pull down.

Select the appropriate **Paper Size** and **Orientation**.

Click **Properties** in the top right corner of the Print dialog.

If you are using Windows 2000 or NT follow the directions in Step 3a.

If you are using Windows 98 or Me follow the directions in Step 3b.



Step 3a: The Document Properties dialog will display.

Click **Advanced** in the bottom right corner of the dialog.

The **PowerRIP Advanced Options** will display.

Note: This is a scrollable window.

Select the **Features** appropriate for your needs.

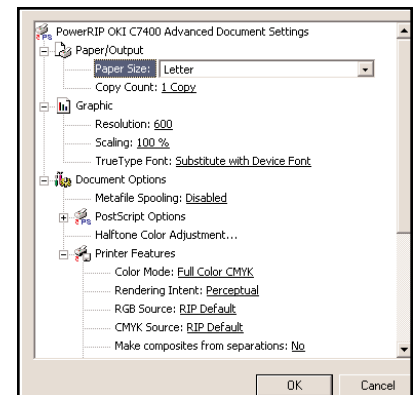
For an in-depth discussion of all the available features for your printer see Chapter 9 of the PowerRIP 2000 manual.

Click **OK**.

Click **OK**.

Click **OK**.

Click **OK**.



If this is the first file you are sending, PowerRIP 2000 will automatically launch, process, and print.

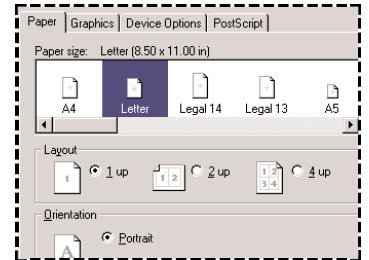
Auto launch will only happen if you have installed PowerRIP 2000 on your c:\ drive. If it is installed on any other drive, you will have to manually launch. To manually launch go to Start>Programs>PowerRIP 2000>PowerRIP 2000.

Printing to PowerRIP 2000 from Photoshop 5.x using Win NT, Me, 2000 & 98 (Cont)

Step 3b: The **PowerRIP Properties** will display.

Paper tab

Select the appropriate **Paper Size** and **Orientation**.



Graphics tab

Select the correct **Resolution**.

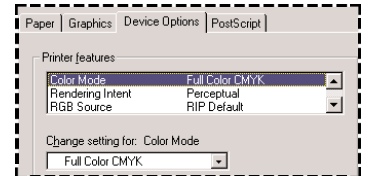


Device Options tab

Note: This is a scrollable window.

Select the **Features** appropriate for your needs.

For an in-depth discussion of all the available features for your printer see Chapter 9 of the PowerRIP 2000 manual.



Click **OK**.

Click **OK**.

Click **OK**.

If this is the first file you are sending, PowerRIP 2000 will automatically launch, process, and print.

Auto launch will only happen if you have installed PowerRIP 2000 on your c:\ drive. If it is installed on any other drive, you will have to manually launch. To manually launch go to Start>Programs>PowerRIP 2000>PowerRIP 2000.