

# Printing to PowerRIP 2000 from QuarkXPress 4.1 using Make Composites from Separations

PowerRIP 2000 recognizes named spot and custom colors, in print jobs and selects the best CMYK match for your printer, ink and paper combination. This is accomplished by using PowerRIP 2000's ability to output a composite using **Make Composites from Separations**.

When you go to Edit>Colors in QuarkXPress to select or create your custom spot color, you must remember to select Spot Color in the Edit Color dialog. If Spot Color is not selected the custom spot color you create will be treated as a process color.

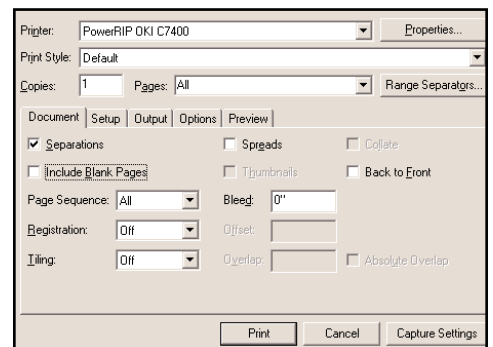
## Step 1: Go to File>Print.

The Print dialog will display.

**Document** tab

Select **Separations**.

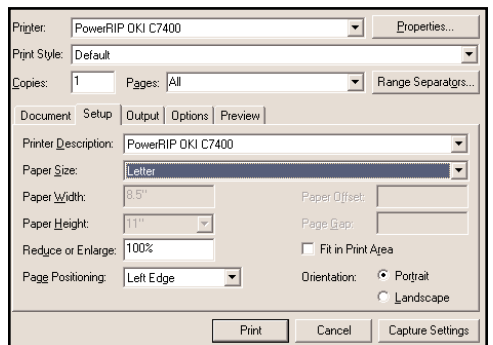
Deselect **Include Blank Pages**.



## Step 2: Setup tab

Make sure you select the correct printer in **Printer Description**.

Select the correct **Paper Size**.



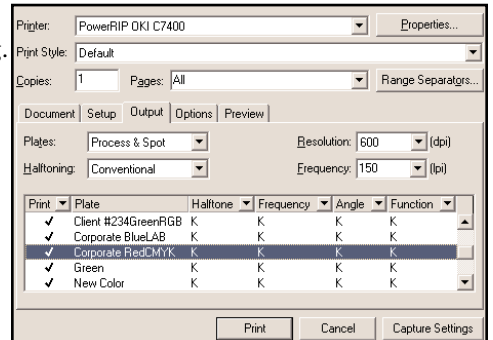
## Step 3: Output tab

Plates must be **Process & Spot**.

Your custom spot colors should be displayed at the bottom of this dialog.

If they are not, you did not select Spot Color when you created them.

Go back to Edit Color dialog in QuarkXPress and select Spot Color.



# Printing to PowerRIP 2000 from QuarkXPress 4.1 using Make Composites from Separations (Cont)

## Step 4: Click Properties

If in Windows 2000 also click **Advanced**.

Select **Yes** in Make Composites from Separations.

Select the rest of the features that are appropriate for your needs.

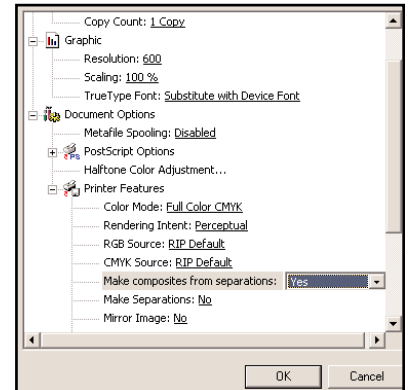
For an in-depth discussion of all the properties for your printer see Chapter 9 of the PowerRIP 2000 manual.

*Note: This is a scrollable dialog.*

Click **OK**.

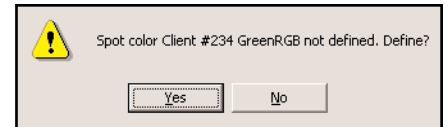
Click **OK**.

Click **Print**.



When you click Print PowerRIP 2000 will start processing and rendering the file. A dialog will display asking you to define your custom spot color for the PowerRIP 2000.

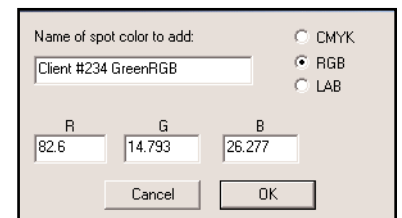
Click **Yes**.



A dialog will display allowing you to define your custom spot colors.

Select the correct color model and enter the appropriate percentages of color.

Click **OK**.



If this is the first file you are sending, PowerRIP 2000 will automatically launch, process, and print.

Auto launch will only happen if you have installed PowerRIP 2000 on your c:\ drive. If it is installed on any other drive, you will have to manually launch. To manually launch go to Start>Programs>PowerRIP 2000>PowerRIP 2000.