

Printing to PowerRIP 2000 from Windows 98 Client to Windows 98 Server

Note: It is not wise to have a screen saver on the server PC. Certain screen savers, when in the sleep mode, can affect the ability of the client PC to access the server PC.

Install PowerRIP 2000 on Windows 98 Server

Step 1:

On the Windows 98 server **Install PowerRIP 2000** using the Quick Start directions.

Validate PowerRIP 2000 on the Server using the Quick Start directions.

Step 2:

After installation and validation on the server, go to **Start>Settings>Printers**. Highlight the printer. Go to **File>Properties**. Go to the **Sharing** tab. Select **Shared As**.

Connect to Remote PowerRIP 2000 on Windows 98 Client

Step 3:

Install **Drivers for Remote Workstations** on the Windows 98 client.

The **Connect to Remote PowerRIP** dialog will display. Highlight the Server in the **Print Server** portion of the dialog.

Highlight the PowerRIP in the **Shared Printers** portion of the dialog.

Note: The name you choose should be the same name as the Shared Name in Step 3.

Click **Connect**.

Step 4:

Select your printer in the **Select Printer Type** dialog box. Click **Continue**.

You will get the message that installation was successful.

Note: If you try to install the same driver twice on the same client machine you could get the error "Adding Printer\xxxx\PowerRIP error 1802 (xxxx - being the server name)"

Click **Done**.

Click **Exit**.

Remove the PowerRIP 2000 CD.

Printing from QuarkXPress 4.1 on the Client to the Server

Quark should be launched and the file you wish to print should be on the screen of the client PC.

Note: For this demonstration the server is called Lynn and the printer is the 1520.

Step 1:

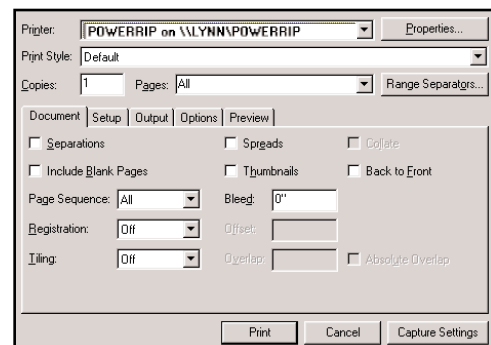
Go to **File>Print**

The **QuarkXPress Print** dialog will display.

Document tab

Select your server in Printer. (For this demonstration we will select **PowerRIPon\Lynn\PowerRIP**)

Deselect **Include Blank Pages**.

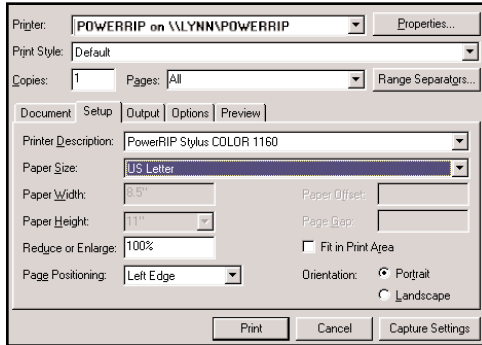


Printing to PowerRIP 2000 from Windows 98 Client to Windows 98 Server (Cont)

Step 2:

Setup Tab

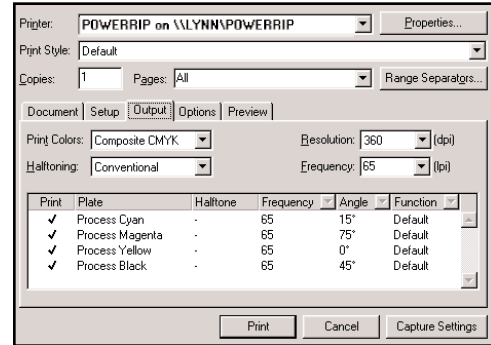
Select the correct **Printer Description** for your printer.
Select the appropriate **Paper Size**.



Step 3:

Output tab

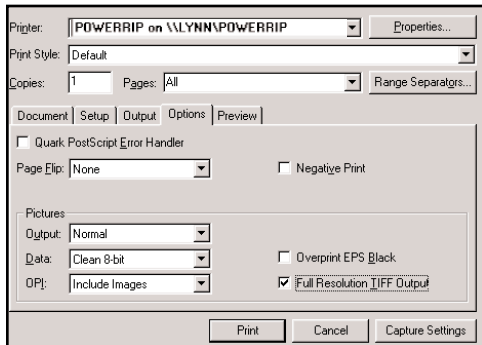
Select **Composite CMYK** in Print Colors.
Select **Conventional** in Halftoning.



Step 4:

Options tab

Select **Normal** in Output.
Select **Full Resolution TIFF Output**.

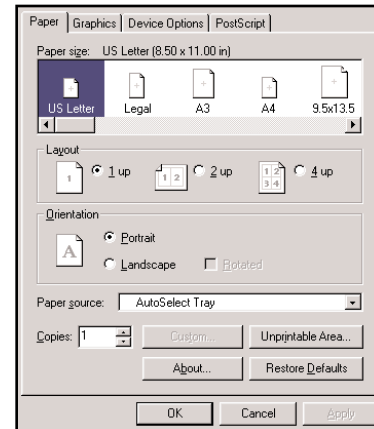


Click Properties in the top right corner of the Print dialog.

Step 5:

Paper tab

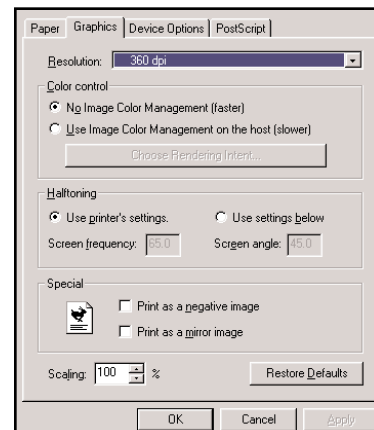
Select the appropriate **Paper** and **Orientation**.



Step 6:

Graphics tab

Select the appropriate **Resolution**.



Printing to PowerRIP 2000 from Windows 98 Client to Windows 98 Server (Cont)

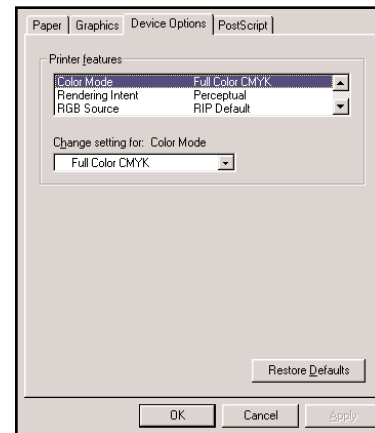
Step 7: Device Options tab

For an in-depth discussion of all the available options for your printer see Appendix 4 of the PowerRIP 2000 manual.

Click **OK**.

Click **Print**.

The file will spool to the server, process, and print.



Printing from PageMaker 6.5

Step 1:

Copy PPD to PageMaker:

Before you can print from PageMaker you must copy the appropriate PPD for your printer to the PageMaker folder. The PowerRIP 2000 PPDs can be found in the US folder in the PPD folder in the PowerRIP 2000 folder on your hard drive. Copy the appropriate PPD to **PM65>RSRC>USENGLISH>PPD4**

Note: Make sure you copy the PPD. Do not select the SPD.

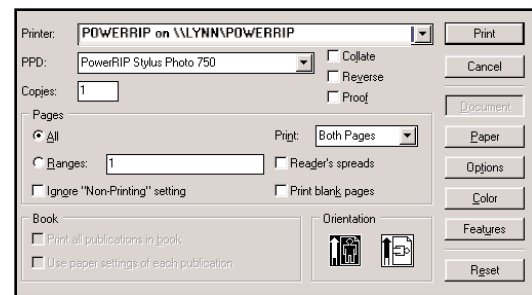
Step 2:

File>Print

The **Print Document** dialog will display.

Select your server in **Printer:**

Select the correct PPD for your printer in **PPD:**

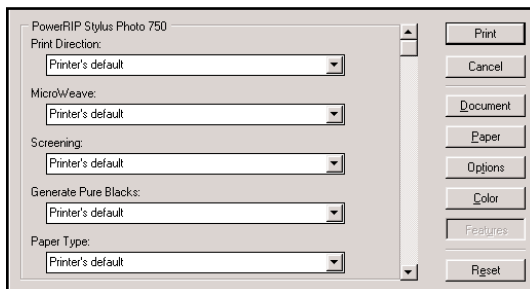


Step 3:

Click **Features**.

For an in-depth discussion of all the available options for your printer see Appendix 4 of the PowerRIP 2000 manual.

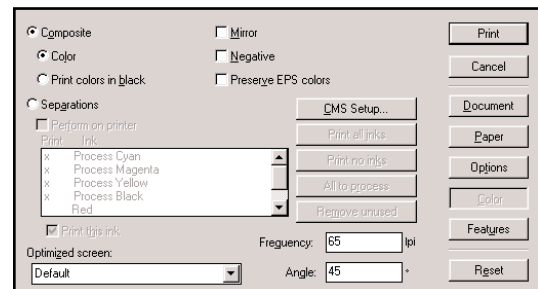
Note: This is a scrollable window.



Step 4:

Click **Color**.

Select **Composite Color**.



Printing to PowerRIP 2000 from Windows 98 Client to Windows 98 Server (Cont)

Click **Options**.

Select **Normal** in Send Image Data.

Click **Print**.

The file will spool to the server, process, and print.

