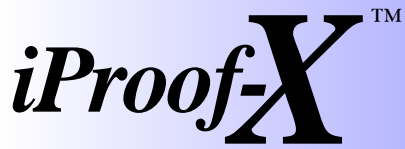




***iProof-X & iProof-X LF
User's Guide
for Epson Ink Jet Printers***

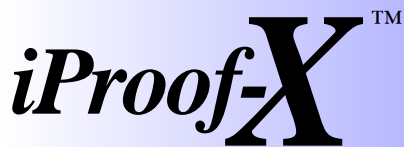
iProof-X™, and iProof logo are the registered trademarks of iProof Systems Inc. iProof-X software copyright 2002. All other product or brand names are the trademarks of their respective companies. US10_02



*Direct Print Driver for Epson Ink Jet Printers
using Apple's OS X 10.2*

Contents

- iProof-X Product Overview3
- Supported Printers3
- System Requirements3
- Installing iProof-X from the iProof-X CD4
- Activate ColorSync7
- Validate iProof-X8
- Adding the Printer to Print Center via USB Connection9
- Adding the Printer to Print Center via an AppleTalk Ethernet Connection10
- Adding the Printer to Print Center via TCP/IP and Type B Ethernet Connection11
- How to Print using iProof-X Page Setup12
- Printing your Document12
- Using the Preview Application and Printing PDF's, TIFF's & Other Formats13
- creating Custom Page Sizes with Preview14



Direct Print Driver for Epson Ink Jet Printers using Apple's OS X 10.2

iProof-X Product Overview

The **iProof-X Direct Print Driver for Epson Printers** is a non-PostScript driver designed to be used with Apple's OS 10.2 or later. iProof-X makes use of the CUPS printing architecture built into Apple's OS 10.2. The iProof-X Driver allows you to print high quality color images and text using ICC profiles designed specifically by iProof for over 55 Epson color ink jet printers.

iProof-X comes standard with iProof's custom PPDs for all the Epson ink jet printers supported. At print time, when selecting the media type and resolution, the correct ICC profiles are also automatically selected. The combination of iProof's custom ICC profiles and printer specific PPDs allows you to print high quality images and smooth crisp type.

It is anticipated, in the near future, that Apple will be releasing an update to OS 10.2 to accommodate direct printing from all applications. It should be noted the present versions of CUPS and Apple's OS 10.2 require some applications to save your files as PDF's or TIFFs at the final output size and then print the PDFs or TIFFs from the "Preview" application, which is part of Apple's OS software. Until such time as an update is available from Apple, the following applications cannot do a direct print to a CUPS based printer, and must save their initial output as a PDF or TIFF and then print from Preview. A partial list of these applications is as follows: QuarkXPress, PageMaker, FreeHand, Photoshop, Illustrator, InDesign, Adobe Acrobat and Apple Works. Direct printing is possible from your web browser or Microsoft Office products to CUPS printers.

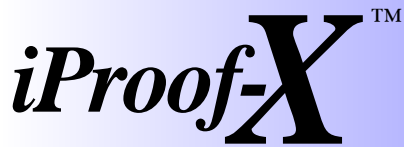
Note: Some versions of Preview, after version 1.0, use a Shrink to Fit feature that can not be deselected. This feature causes margins to be calculated twice, once in the original and again at print time. Output is approximately 6% smaller than the actual page design if printing on the same page size as the original. To alleviate Shrink to Fit, print the image on a sheet larger than the page was originally designed for, or use Preview version 1.0, which does not exhibit this problem.

Supported Printers

iProof-X software supports the following Epson Printers via USB, USB to Parallel and Ethernet. Epson Stylus Color Pro, Pro XL, and ProXL+, 5000, 5500. Epson Stylus Color 500, 600, 680, 740, 740i, 760, 777, 800, 800N, 850, 850NE, 860, 880, 900G, 900N, 980, 980, 1160, 1520, 3000, C60, C70, C80. Epson Stylus Scan 2000, 2500, 2500Pro. Epson Stylus Photo, Photo Ex, Photo EX3, 700, 750, 780, 790, 810, 820, 870, 875DC, 890, 1200, 1270, 1280, 1290, 2000P.

System Requirements

Macintosh System requirements Power Macintosh, OS X 10.2 (Jaguar), 128 MB RAM min., 500 MB of available disk space, CD-ROM drive.

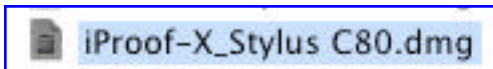


Direct Print Driver for Epson Ink Jet Printers using Apple's OS X 10.2

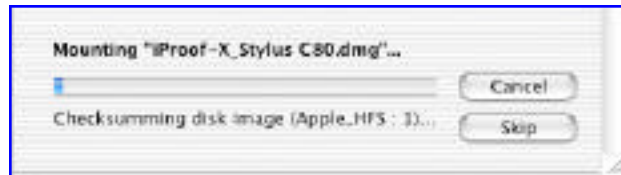
Installing iProof-X for the iProof-X CD

1. Insert the iProof-X CD into your CD-ROM drive. Open the CD.
A list of all the printer drivers will display. Scroll down until you find your printer.

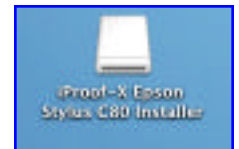
Double click on the dmg file.



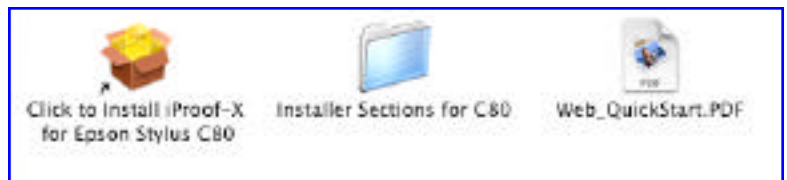
A dialog will display as the iProof-X driver is mounted on your hard drive.



As the driver is mounted a Volume will be created on your hard drive. It will contain the iProof-X Installer and documentation.

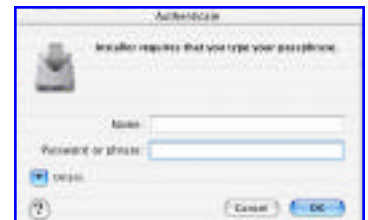


2. Click on the **iProof-X Volume Installer** to open. The Volume Installer includes the iProof-X driver install plus documentation.



Note: Make a copy of the Volume and save it on your hard drive. Do not save the copy on the desktop. This will allow you to go back at a later time and access your documentation. If you do not make a copy of the Volume, after installation of the iProof-X driver and after restart, the Volume will be removed from your desktop.

3. Click on the **iProof-X Installer** icon. The Authenticate dialog will display. Type your name and password or phrase. If you are not using a password or phrase leave blank and click **OK**.



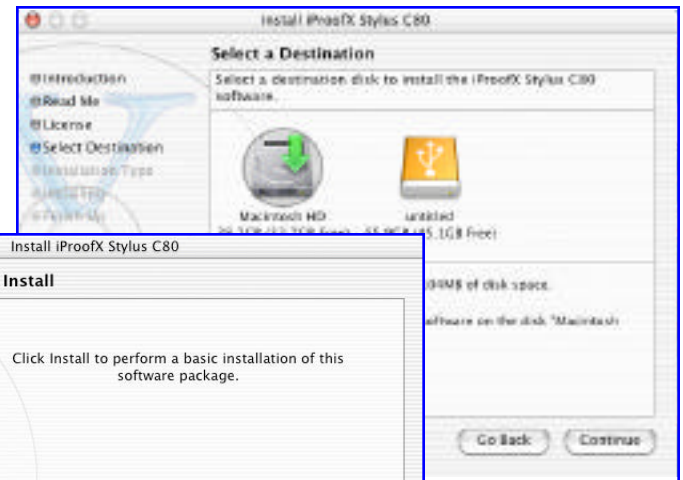
iProof-X™

Direct Print Driver for Epson Ink Jet Printers using Apple's OS X 10.2

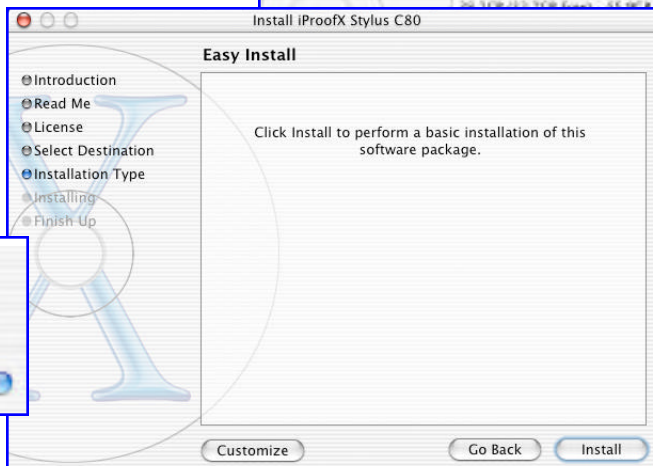
7. A dialog will display asking you to click Agree if you agree with the License Agreement. Click **Agree**.



8. The **Select a Destination** dialog will display. Highlight the drive you wish to install to. Click **Continue**.



9. **Easy Install** dialog will display. Click **Install**. A dialog display will tell you to restart the computer after install.

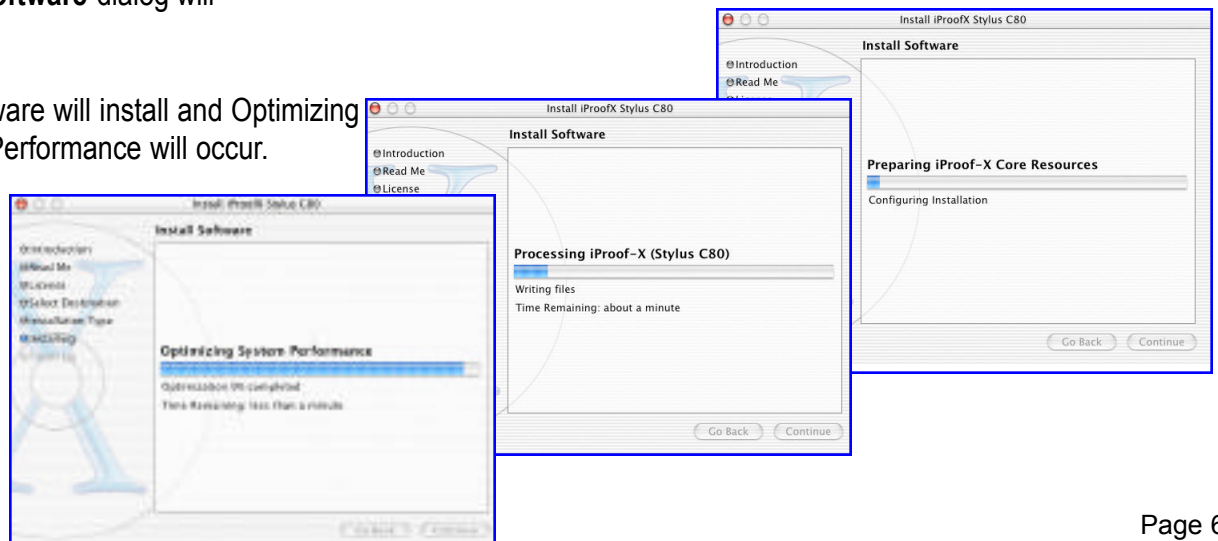


Click **Continue Installation**.



10. The software will start installing. **iProof Software** dialog will display.

The software will install and Optimizing System Performance will occur.

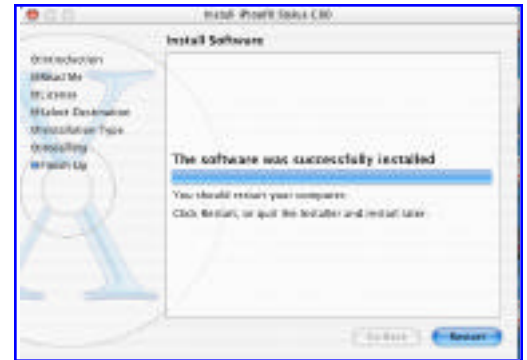


iProof-X™

Direct Print Driver for Epson Ink Jet Printers using Apple's OS X 10.2

11. When “The software was successfully installed” displays click **Restart**.

Note: Before you click Restart make sure that your printer is cable connected to your computer and that the printer is turned on.



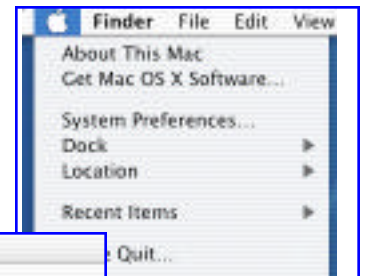
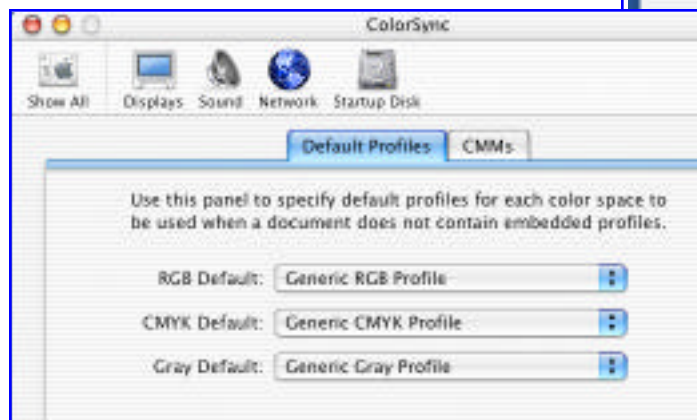
Activate ColorSync

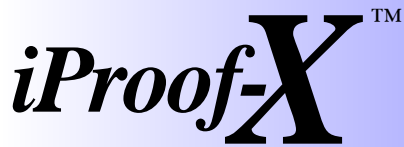
Before you print you need to activate ColorSync, so it will automatically use ICC profiles when printing with the iProof-X driver. If this dialog is left blank ICC profiles will not take effect and it will affect the color output.

Go to **System Preferences**.
Launch **ColorSync**.

The **ColorSync Default Profiles** dialog will display.

Select your custom RGB profile or **Generic RGB Profile** in RGB Default, select your custom CMYK or **Generic CMYK Profile** in CMYK Default and select **Generic Gray Profile** in Gray Default. Save the profile selections, close the dialog.





Direct Print Driver for Epson Ink Jet Printers using Apple's OS X 10.2

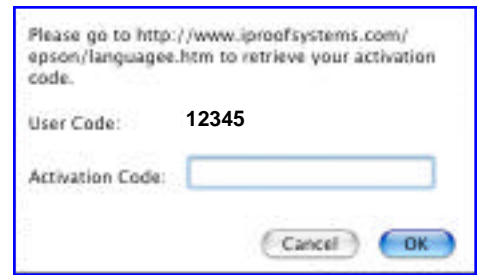
Validate iProof-X

When you installed the iProof-X Driver, iProof-X Epson utility was also installed in the Applications folder on your hard drive. Before using iProof-X Driver you must validate the software. If you do not validate your copy of iProof-X, a watermark in the form of a large X will print across your output. Follow the steps below to validate:

- 1. In Applications folder on your hard drive launch the **iProof-X Epson Utility**. The **Printer List** dialog will display.

- 2. Go to **File/Install Validation**. The **iProof-X Validation** dialog will display. Write the User Code displayed in the iProof-X Validation dialog in this box.

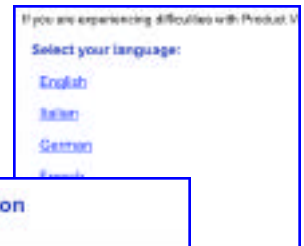
Write your Product code in this box.



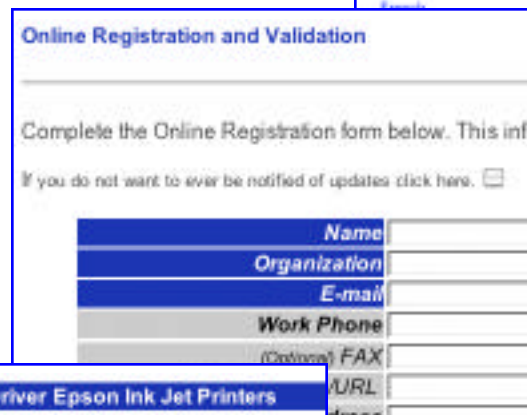
Go to:

<http://www.iproofsystems.com/epson/languagee.htm>

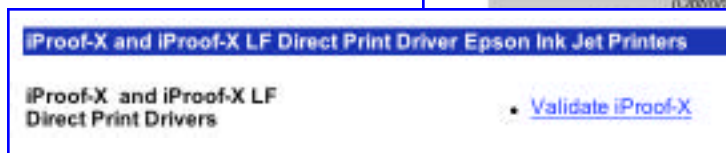
- 3. The Validation page will display. Select English as your language.



- 4. The **Online Registration and Validation** window will display. Fill out the registration form and click **Submit Form**.



- 5. The Validation page will display. Click on Validate **iProof-X**. Enter your **Product Code** and **User Code** then click **Submit**.



- 6. Your **Activation Code** will appear on the next screen. Write down the activation code. Quit your browser.



Direct Print Driver for Epson Ink Jet Printers using Apple's OS X 10.2

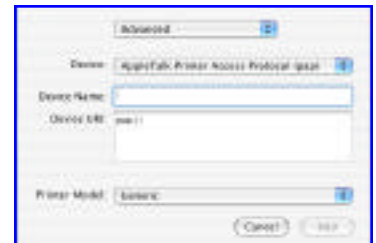
7. Enter the **Activation Code** in the Validation dialog Activation box and click **OK**. Click **Quit**. Your iProof-X driver is now validated.

*Note: Save these numbers in case they need to be entered again.
These numbers will only work on this computer as per the license.*

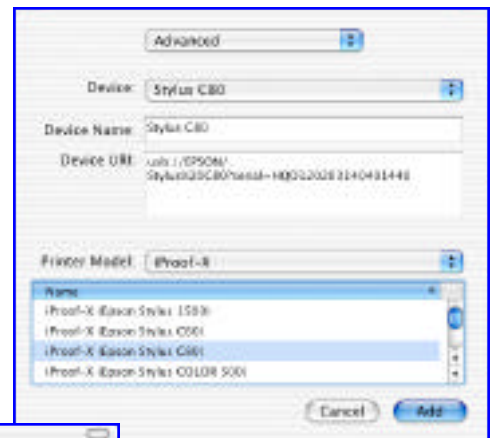
Adding the Printer to Print Center via USB Connection

1. To access Print Center go to **Applications/Utilities** and click on **Print Center**.

2. Hold down the **Option** key and double click the **Add** icon. The **Directory Services** dialog will display. Select **Advanced** in the Directory Services pull-down.



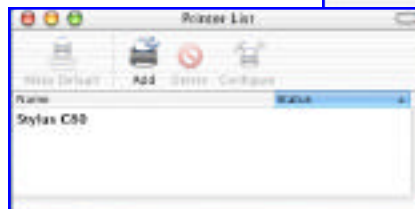
3. In **Device** pull-down select your printer, which is usually at the bottom of the list. If you see a printer listed as “Unknown”, it means your printer is seen, but is not returning a name, this is alright. Older printers such as the Stylus Pro, Pro XL and Pro XL+ do not give back a name when using a USB to parallel cable.



4. In **Device Name**: Key in a printer name that will be meaningful to you.

5. In **Printer Model**: select **iProof-X**.
Highlight the PPD for your printer in the lower screen

6. Click **Add**. Your printer will be added to the Print Center. You are now ready to print
Note: If you have more than one Epson printer, repeat this procedure for each printer you wish to print to.



What If I can not see my printer?

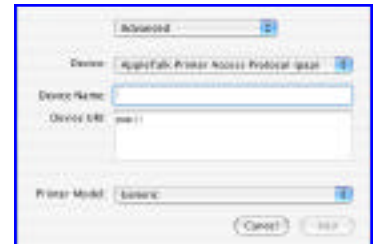
If your printer does not show up in the Device pull down, go to System Preferences, then “Sharing” option and then “Share Printer” and toggle the stop/start selection for share printer utility off/on to open the connection.



Direct Print Driver for Epson Ink Jet Printers using Apple's OS X 10.2

Adding the Printer to Print Center via an AppleTalk Ethernet Connection

1. To access Print Center go to Applications/Utilities and click on **Print Center**.
2. Hold down the **Option key** and double click the **Add** icon. The **Directory Services** dialog will display.
Select **Advanced** in the Directory Services pull-down.



3. In **Device** pull-down select **AppleTalk Printer Access Protocol (PAP)**
4. In **Device Name**: Key in a printer name that will be meaningful to you.
5. In **Device URL**: Key in "PAP://Zone Name or */Printer Name/Printer Entity Type

Note: Capitalization and punctuation used must be exact.

To find the correct Printer Name and Printer Entity:

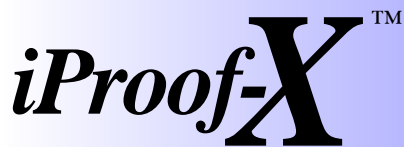
Press the button on your AXIS dongle or Ethernet card to print the test page. Find the AppleTalk session portion of the test page. It should list the printer name and type. The type should always be EPSONLQ2 unless you had reconfigured the card during installation.

If you have only one zone then an * should be used.

Example: pap://*/Epson_Stylus_C80/EPSONLQ2



6. In **Printer Model**: select **iProof-X**. **Highlight the PPD** for your printer
7. Click **Add**



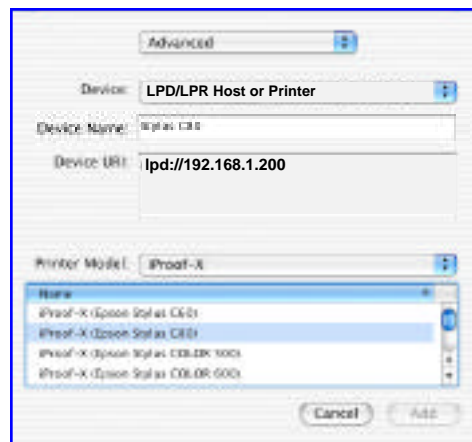
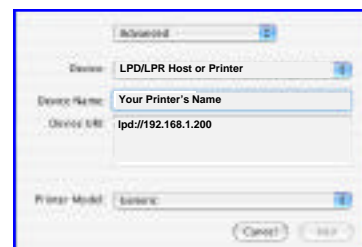
Direct Print Driver for Epson Ink Jet Printers using Apple's OS X 10.2

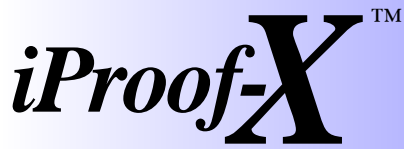
Adding the Printer to Print Center via TCP/IP and Type B Ethernet Connection

You must know your TCP/IP card address or you must configure your type-B card. It is best to use Manual addressing to obtain a permanent IP address, that will not change randomly as DHCP does. If you use DHCP be aware that your printer address may change at random and you will have to add your printer again.

Epson offers, on their website, an "Epson Net Mac Assist" application for Classic. Ask Epson for OS X availability or use it in Classic. Install and run the application, it will search for cards and printers.

1. Select DHCP and "send" to get the correct sub-net mask and gateway for your card. Then change it to "manual" and create a "safe address" number not used by others. For example change the last three address digits and chose a number over 200 and less than 250.
2. Go to Print Center, hold down the Option key and under Printers select **Add Printer**. Directory Services dialog will display. Select **Advanced** in the pull-down.
3. In Device pull-down select **LPD/LPR Host or Printer**
4. In Device Name: Key in a printer name that will be meaningful to you.
5. In Device URL: Key in lpd://XXX.XXX.XXX.XXX (your own card's actual IP address)
6. In Printer Model: select iProof-X.
7. Highlight the PPD for your printer. Click **Add**.

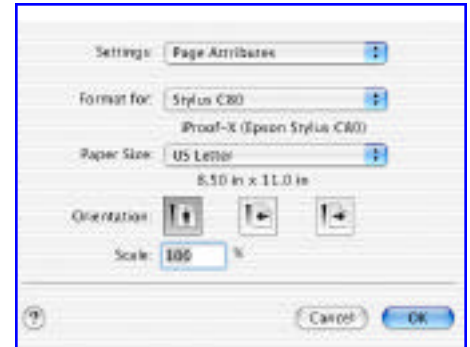




Direct Print Driver for Epson Ink Jet Printers using Apple's OS X 10.2

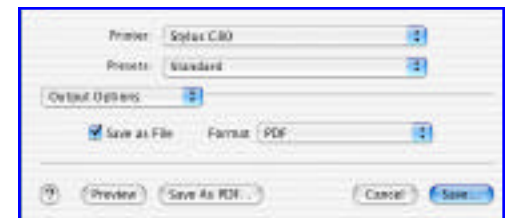
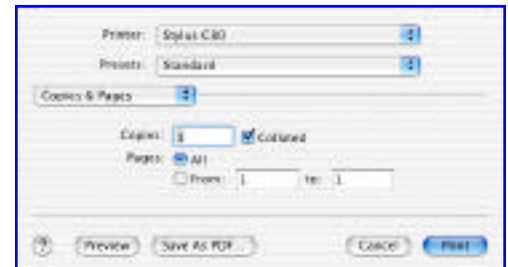
How to Print using iProof-X Page Setup

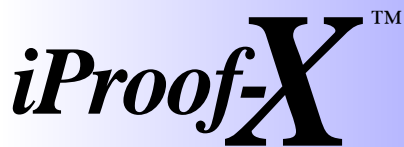
1. Go to **File/Page Setup**. The Page Setup dialog will display.
2. Select your printer in the **Format for** pull-down.
3. Select your Paper Size in the **Paper Size** pull-down.
4. Select your **orientation** and scaling if applicable. Click **OK**.



Printing your Document

1. Go to **File/Print**. The Print dialog will display.
2. In **Copies & Pages** select the number of copies you require and the pages you wish to print.
3. In the Copies & Pages pull-down go to **Layout**. Select the appropriate layout if applicable.
4. In the Copies & Pages pull-down go to **Output Options**. Select Save as PDF if your application does not support direct CUPS printing.
Note: See Overview for explanation of why Save as PDF is sometimes required.
-or you may-
Select Print if your application supports direct printing to a CUPS printer.





Direct Print Driver for Epson Ink Jet Printers using Apple's OS X 10.2

Note: **Error Handling** - requires no action.

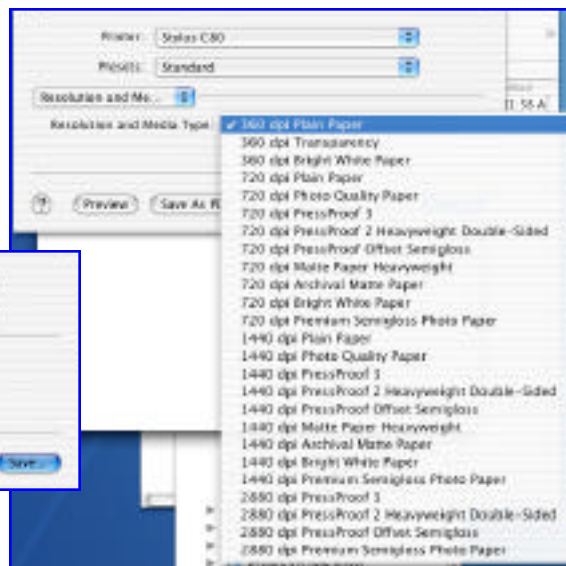
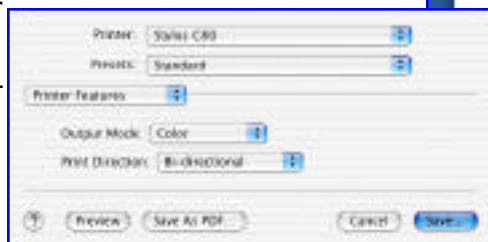
Paper Feed - no action required unless you are using a printer that has multiple paper trays.

5. In the Copies & Pages pull-down go to **Media Type and Resolution**.

Select desired media type and resolution.

6. In the Copies & Pages pull-down go to **Printer Features**.

Select either Color or Grayscale in output Mode and Print direction Unidirectional or Bi-directional. Bi-directional is faster and does not significantly decrease print quality.



Note: **Summary** - requires no action.

7. Click **Save**. The Save as PDF dialog will display. Save your PDF in the folder of your choice on your hard drive. Click **Save**. Messages that may appear related to PostScript features do not apply to PDF printing.
-or you may-
Click **Print** if your application supports direct printing to a CUPS based printer.

Using the Preview Application and Printing PDF's, TIFF's & Other Formats

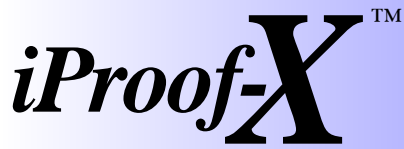
In the Application folder on your hard drive you will find Preview. The Preview application supports viewing and printing from PDF, TIFF, JPEG, PICT, GIF, and PNG. Holding down the Option key drag a copy of Preview to your desktop.

Note: This needs to be done only once so that Preview is easily accessible.

1. Go to the folder you saved your PDF file to. Drag the file over the top of the Preview icon on your desktop. This will launch Preview and display the PDF.

Note: If Preview is already launched you can open the PDF or TIFF or other supported file format by going to File/Open. See overview in front of quick start explaining some temporary Preview sizing limitations.

2. Go to **File/Page Setup**. Select the appropriate features. It is recommended that you select the same features selected to create the PDF.
3. Go to **File/Print**. Select the appropriate features. It is recommended that you select the same features selected to create the PDF. Click **Print**



Direct Print Driver for Epson Ink Jet Printers using Apple's OS X 10.2

Creating Custom Page Sizes with Preview

1. Select **File/Page Setup**. Select **Settings/Custom Paper Size**. A dialog will appear.
2. Select **New** and give the "Untitled" page size created a name. Key in the **Paper Size** you want within the capabilities of the printer.
Printer Margins vary by printer model, but generally are from 1/8 to 1/4 of an inch top, left, right and from 1/8 to 2/3 of an inch on the bottom.
3. Select **Save** and then **OK**. The dialog screen will disappear.
4. Go back to **Page Setup** and choose **Format For: Any Printer**. Then choose in **Paper Size** the custom page size you just created.
5. Select **File/Print**. In **Printer**: Do not choose "Any Printer" now. **Choose your iProof-X printer driver**. Select the media and resolution. **Print**.